

Heavy Equipment & Commercial Truck **AUCTION CATALOG**



J. STOUT AUCTIONS

520 S. 28TH Street
Washougal, WA 98671
888-230-8840

www.jstoutauction.com

APRIL 29TH, 2020



FEATURING 150+ RENTAL EQUIPMENT ITEMS

SOLD FROM MULTIPLE LOCATIONS

RING 1

RING 1: Lots 1-End

Heavy Equipment, Commercial Trucks, Trailers, Pickups & Passenger Vehicles, Industrial Items

The Auctioneers, sellers, or any member of their staff make no guarantee as to the authenticity of any particular age, year of manufacture, model, make, mileage, condition or defect of any lot or item being sold. Bidders are encouraged to make their own physical inspection and rely solely on that inspection before bidding.

NEXT LIVE ONLINE-ONLY AUCTION:

May 28th 8:30AM

Live Online-Only Auction

Heavy Equipment, Commercial Trucks & Gov. Surplus Various Locations

**More Information Call 888-230-8840 OR
WWW.JSTOUTAUCTION.COM**

REGISTER TO BID

BID IN LIVE ONLY-ONLINE
WWW.JSTOUTAUCTION.COM
On the home page Select:
Live/Online Auctions



Then Select: **proxibid**

OR



OR

Find the correct auction by looking at the date & Select the Item you'd like to Bid on:

BID NOW \$

Register to Bid for Free with: **proxibid**

In the left-hand corner select "Register to Bid."

Register To Bid

Register to Bid for Free with:



Select Absentee Bid and download the PDF Form. Fill this out and email to:

sales@jstoutauction.com

Once you login and place a pre-bid on items, Proxibid or Equipmentfacts will email you what you have bid on, if you get outbid and/or if you win the bid on 4/29.

ONLINE BUYERS PREMIUM: 12.5% UP TO 10K AND 7.5% over \$10K PER ITEM*

ABSENTEE BUYER PREMIUM: 10% UP TO 10K AND 5% over \$10K PER ITEM*

ALWAYS FREE TO REGISTER / FREE TO BID / OPEN TO THE PUBLIC

HELPFUL TIPS

- Remember items are sold from multiple locations, be sure to check the location of the item you plan to bid on
- Call 888-230-8840 to schedule an appt. to preview
- JSA DOES NOT handle any shipping, be prepared to handle all shipping yourself
- Titled Items will have extra documentation fees
- Due to COVID-19, Buyers have 7-Days to pay and 15-Days to pick up, JSA is NOT open on the weekend*
- ****The following information above is for reference, the full terms & conditions are listed online at www.jstoutauction.com or further down in this document*

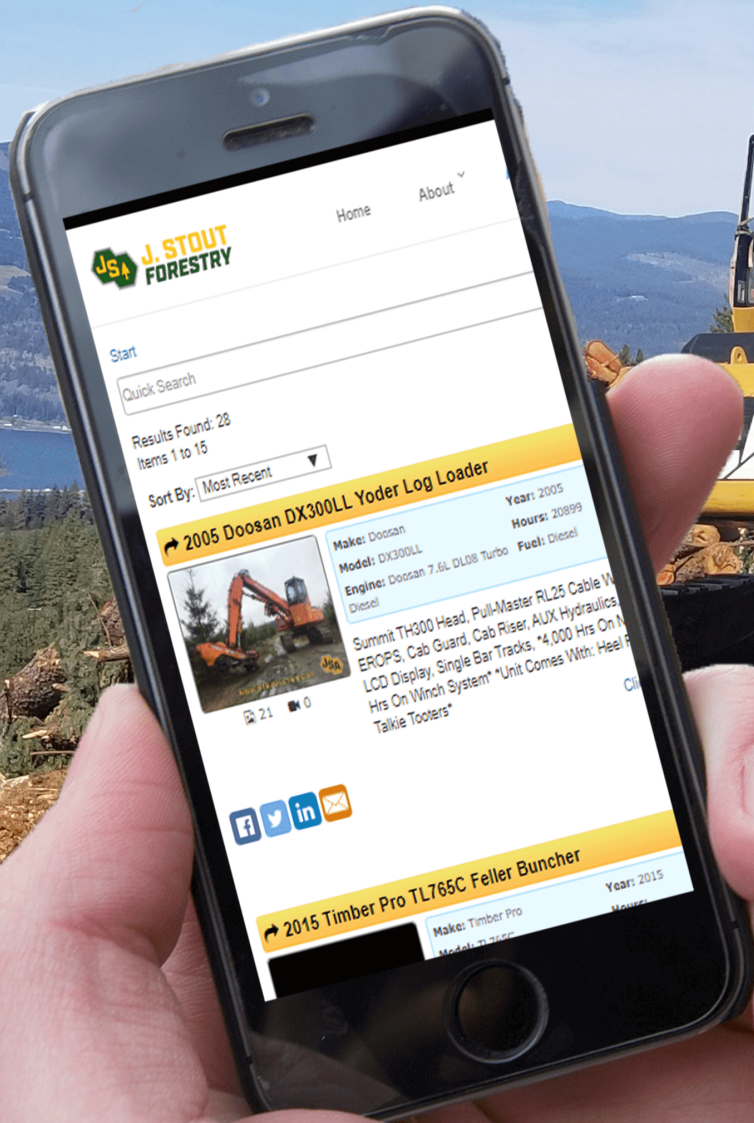
www.jstoutauction.com



**J. STOUT
AUCTIONS**

PUBLIC AUCTION / ONLINE BIDDING / FREE REGISTRATION

TIME IS MONEY.



**Bid Online.
Keep the Crew
Logging.**



**J. STOUT
FORESTRY**

FORESTRY EQUIPMENT DEALER & AUCTION COMPANY

A resource to Forestry Contractor to market and sell used or excess equipment as opposed to sending it directly to an auction. JSF is proud to be apart of the Forestry Community with 70 years of combined auction experience and 100 years of combined sales equipment experience.

WWW.JSF.BID / 888-230-8840 / 520 S. 28th Street, Washougal, WA 98671



J. STOUT
AUCTIONS

Meet Your Sales Representative

Questions about Buying or Selling? Give the Rep. in your area a call to help answer all your questions.



Jim McNeal

VP of Sales

Corporate Accounts & Regional Manager



509-808-6361



jim@jstoutauction.com



Mark Core

Territory Sales Manager

Northwest Oregon/Southern Oregon



503-910-2464



mark@jstoutauction.com



Jamie Cox

Spokane General Manager

Central/Eastern WA, ID, MT



509-368-4880



jamie@jstoutauction.com



Jed Stout

Territory Sales Manager

Southwest & Western Washington



360-904-0726



jed@jstoutauction.com



Live Online Heavy Equipment & Commercial Truck 4/29/2020

LOT #	DESCRIPTION
1	2020 Wolverine Salt & Sand Spreader Location: Spokane Washington To Fit Skid Steer Loader
2	2020 Wolverine Concrete Mixer Location: Spokane Washington To Fit Skid Steer Loader
3	2020 Wolverine Concrete Mixer Location: Spokane Washington To Fit Skid Steer Loader
4	2020 Wolverine Auger Location: Spokane Washington To Fit Skid Steer Loader
5	2020 Wolverine Auger Location: Spokane Washington To Fit Skid Steer Loader
6	2020 Wolverine Trencher Location: Spokane Washington To Fit Skid Steer Loader
7	2020 Wolverine Rotary Tiller Location: Spokane Washington To Fit Skid Steer Loader
8	2020 Wolverine 72in. Brush Cutter Location: Spokane Washington To Fit Skid Steer Loader
9	2020 Wolverine 72in. Box Broom Location: Spokane Washington To Fit Skid Steer Loader
10	2020 Wolverine 72in. Angle Broom Location: Spokane Washington To Fit Skid Steer Loader

LOT # DESCRIPTION

11 2020 Easy-Kleen Magnum 4000 Gold Pressure Washer

Location: Spokane Washington

Engine: Lifan 15hp Gas

4,000 psi, 3.5 gpm, Electric Ignition w/ Pull Start Back Up, Diesel Burner w/ 10
Gallon Fuel Tank, 350,000 BTU, Temperature Control, Adjustable Pressure
Control, 3/8 in. High Pressure Hose, Gun, Nozzles, Heavy Duty Protection Cage,
13in. Pneumatic Tires

12 2020 Easy-Kleen Magnum 4000 Gold Pressure Washer

Location: Spokane Washington

Engine: Lifan 15hp Gas

4,000 psi, 3.5 gpm, Electric Ignition w/ Pull Start Back Up, Diesel Burner w/ 10
Gallon Fuel Tank, 350,000 BTU, Temperature Control, Adjustable Pressure
Control, 3/8 in. High Pressure Hose, Gun, Nozzles, Heavy Duty Protection Cage,
13in. Pneumatic Tires

13 2020 Easy-Kleen Magnum 4000 Gold Pressure Washer

Location: Spokane Washington

Engine: Lifan 15hp Gas

4,000 psi, 3.5 gpm, Electric Ignition w/ Pull Start Back Up, Diesel Burner w/ 10
Gallon Fuel Tank, 350,000 BTU, Temperature Control, Adjustable Pressure
Control, 3/8 in. High Pressure Hose, Gun, Nozzles, Heavy Duty Protection Cage,
13in. Pneumatic Tires

14 2020 Easy-Kleen Magnum 4000 Gold Pressure Washer

Location: Spokane Washington

Engine: Lifan 15hp Gas

4,000 psi, 3.5 gpm, Electric Ignition w/ Pull Start Back Up, Diesel Burner w/ 10
Gallon Fuel Tank, 350,000 BTU, Temperature Control, Adjustable Pressure
Control, 3/8 in. High Pressure Hose, Gun, Nozzles, Heavy Duty Protection Cage,
13in. Pneumatic Tires

15 2020 Easy-Kleen Magnum 4000 Gold Pressure Washer

Location: Spokane Washington

Engine: Lifan 15hp Gas

4,000 psi, 3.5 gpm, Electric Ignition w/ Pull Start Back Up, Diesel Burner w/ 10
Gallon Fuel Tank, 350,000 BTU, Temperature Control, Adjustable Pressure
Control, 3/8 in. High Pressure Hose, Gun, Nozzles, Heavy Duty Protection Cage,
13in. Pneumatic Tires

16 2006 Lincoln-Electric Vantage 300 Towable Welder

Location: Salt lake city Utah

S/N: 1L9U2121060184314

Engine: Kubota V1505 Diesel

Lincoln Vantage Welder/Generator, 1 & 3 Phase, 10,000 Peak Watt, 400 Amp, Ball

LOT # DESCRIPTION

Hitch

This item is located at 2051 N. Redwood Rd., Salt Lake City, Utah. To preview this item call 888-230-8840 to schedule an appointment. All questions regarding this machine and/or the purchase of this machine are to be directed to JSA at the number above.

Hours: 612

17 2010 Wanco WLTC4 Towable Light Tower

Location: Colorado Springs Colorado

S/N: 5F13D1413A1002961

Engine: Kubota D1105 1.1L Diesel

4,000 Watt, Single Phase, 6 KVA, 120/240 Volt, 50/25 Amps, 60 Hz, 4 Lights, 3 Stabilizers, Ball Hitch

*This item is located at 11211 E. Cheyenne Rd., Colorado Springs, Colorado. To preview this item call 888-230-8840 to schedule an appointment. All questions regarding this machine and/or the purchase of this machine are to be directed to JSA at the number above.*** Title Delay**

Hours: 5,303

18 2010 Wanco WLTC4 Towable Light Tower

Location: Commerce City Colorado

S/N: 5F13D1419A1003001

Engine: Kubota D1105 1.1L Diesel

4,000 Watt, Single Phase, 6 KVA, 120/240 Volt, 50/25 Amps, 60 Hz, 4 Lights, 3 Stabilizers, Ball Hitch

*This item is located at 5420 Dahlia St., Commerce City, Colorado. To preview this item call 888-230-8840 to schedule an appointment. All questions regarding this machine and/or the purchase of this machine are to be directed to JSA at the number above.*** Title Delay**

Hours: 4,983

19 2011 Wanco WLTC4 Towable Light Tower

Location: Colorado Springs Colorado

S/N: 5F13D1419B1002593

Engine: Kubota D1105 1.1L Diesel

4,000 Watt, Single Phase, 6 KVA, 120/240 Volt, 50/25 Amps, 60 Hz, 4 Lights, 3 Stabilizers, Ball Hitch

*This item is located at 11211 E. Cheyenne Rd., Colorado Springs, Colorado. To preview this item call 888-230-8840 to schedule an appointment. All questions regarding this machine and/or the purchase of this machine are to be directed to JSA at the number above.*** Title Delay**

Hours: 5,368

LOT # DESCRIPTION

20 2011 Wanco WLTC4 Towable Light Tower

Location: Colorado Springs Colorado

S/N: 5F13D1417B1002771

Engine: Kubota D1105 1.1L Diesel

4,000 Watt, Single Phase, 6 KVA, 120/240 Volt, 50/25 Amps, 60 Hz, 4 Lights, 3 Stabilizers, Ball Hitch

*This item is located at 11211 E. Cheyenne Rd., Colorado Springs, Colorado. To preview this item call 888-230-8840 to schedule an appointment. All questions regarding this machine and/or the purchase of this machine are to be directed to JSA at the number above.*** Title Delay**

Hours: 6,360

21 2012 Genie AWP25S-DC Man Lift

Location: Commerce City Colorado

S/N: AWP12-74948

Engine: Electric

24ft. Height, 29in. Platform Width, 350lb. Platform Capacity, Push Around, Non-Marking Tires

This item is located at 5420 Dahlia St., Commerce City, Colorado. To preview this item call 888-230-8840 to schedule an appointment. All questions regarding this machine and/or the purchase of this machine are to be directed to JSA at the number above.

22 2013 Genie GR-12 Man Lift

Location: Linden Utah

S/N: GR13-25537

Engine: Electric

12ft. Height, 500lb. Platform Capacity, 30% Grade Ability, Zero Inside Turn Radius, Self Propelled, Non-Marking Tires

This item is located at 1261 West 300 South, Lindon, Utah. To preview this item call 888-230-8840 to schedule an appointment. All questions regarding this machine and/or the purchase of this machine are to be directed to JSA at the number above.

Hours: 146

23 2012 Genie GR-20 Man Lift

Location: Englewood Colorado

S/N: GR12-22089

Engine: Electric

20ft. Height, 350lb. Platform Capacity, 30% Grade Ability, Zero Inside Turn Radius, Rotating Jib, 31in. Platform Width, Self Propelled, Non-Marking Tires

This item is located at 12550 E. Broncos Pkwy., Englewood, Colorado. To preview this item call 888-230-8840 to schedule an appointment. All questions regarding this machine and/or the purchase of this machine are to be directed to JSA at the number above.

LOT # DESCRIPTION

Hours: 270

24 2012 Genie GR-20 Man Lift

Location: Englewood Colorado

S/N: GR12-22093

Engine: Electric

20ft. Height, 350lb. Platform Capacity, 30% Grade Ability, Zero Inside Turn Radius, Rotating Jib, 31in. Platform Width, Self Propelled, Non-Marking Tires

This item is located at 12550 E. Broncos Pkwy., Englewood, Colorado. To preview this item call 888-230-8840 to schedule an appointment. All questions regarding this machine and/or the purchase of this machine are to be directed to JSA at the number above.

Hours: 264

25 2012 Genie GR-20 Man Lift

Location: Commerce City Colorado

S/N: GR12-22345

Engine: Electric

20ft. Height, 350lb. Platform Capacity, 30% Grade Ability, Zero Inside Turn Radius, Rotating Jib, 31in. Platform Width, Self Propelled, Non-Marking Tires

This item is located at 5420 Dahlia St., Commerce City, Colorado. To preview this item call 888-230-8840 to schedule an appointment. All questions regarding this machine and/or the purchase of this machine are to be directed to JSA at the number above.

Hours: 331

26 2012 Genie GR-20 Man Lift

Location: Commerce City Colorado

S/N: GR12-22409

Engine: Electric

20ft. Height, 350lb. Platform Capacity, 30% Grade Ability, Zero Inside Turn Radius, Rotating Jib, 31in. Platform Width, Self Propelled, Non-Marking Tires

This item is located at 5420 Dahlia St., Commerce City, Colorado. To preview this item call 888-230-8840 to schedule an appointment. All questions regarding this machine and/or the purchase of this machine are to be directed to JSA at the number above.

Hours: 230

27 2012 Genie GR-20 Man Lift

Location: Commerce City Colorado

S/N: GR12-22849

Engine: Electric

20ft. Height, 350lb. Platform Capacity, 30% Grade Ability, Zero Inside Turn Radius, Rotating Jib, 31in. Platform Width, Self Propelled, Non-Marking Tires

*This item is located at 5420 Dahlia St., Commerce City, Colorado. To preview this

LOT # DESCRIPTION

item call 888-230-8840 to schedule an appointment. All questions regarding this machine and/or the purchase of this machine are to be directed to JSA at the number above.*

Hours: 318

28 2012 Genie GR-20 Man Lift

Location: Fort Collins Colorado

S/N: GR12-22852

Engine: Electric

20ft. Height, 350lb. Platform Capacity, 30% Grade Ability, Zero Inside Turn Radius, Rotating Jib, 31in. Platform Width, Self Propelled, Non-Marking Tires

This item is located at 4228 E. Mulberry St., Fort Collins, Colorado. To preview this item call 888-230-8840 to schedule an appointment. All questions regarding this machine and/or the purchase of this machine are to be directed to JSA at the number above.

Hours: 356

29 2012 Genie GR-20 Man Lift

Location: Fort Collins Colorado

S/N: GR12-22931

Engine: Electric

20ft. Height, 350lb. Platform Capacity, 30% Grade Ability, Zero Inside Turn Radius, Rotating Jib, 31in. Platform Width, Self Propelled, Non-Marking Tires

This item is located at 4228 E. Mulberry St., Fort Collins, Colorado. To preview this item call 888-230-8840 to schedule an appointment. All questions regarding this machine and/or the purchase of this machine are to be directed to JSA at the number above.

Hours: 366

30 2012 Genie GR-20 Man Lift

Location: Englewood Colorado

S/N: GR12-23043

Engine: Electric

20ft. Height, 350lb. Platform Capacity, 30% Grade Ability, Zero Inside Turn Radius, Rotating Jib, 31in. Platform Width, Self Propelled, Non-Marking Tires

This item is located at 12550 E. Broncos Pkwy., Englewood, Colorado. To preview this item call 888-230-8840 to schedule an appointment. All questions regarding this machine and/or the purchase of this machine are to be directed to JSA at the number above.

Hours: 330

31 2012 Genie GR-20 Man Lift

Location: Fort Collins Colorado

S/N: GR12-23049

Engine: Electric

LOT # DESCRIPTION

20ft. Height, 350lb. Platform Capacity, 30% Grade Ability, Zero Inside Turn Radius, Rotating Jib, 31in. Platform Width, Self Propelled, Non-Marking Tires
This item is located at 4228 E. Mulberry St., Fort Collins, Colorado. To preview this item call 888-230-8840 to schedule an appointment. All questions regarding this machine and/or the purchase of this machine are to be directed to JSA at the number above.

Hours: 332

32 2012 Genie GS1930 Scissor Lift

Location: Grand Junction Colorado

S/N: GS3012A-113251

Engine: Electric

19ft. Height, 30in. Platform Width, 500lb. Platform Capacity, 36in. Platform Extension, AC Power Inverter, Zero Inside Turning Radius, Non-Marking Tires

This item is located at 2320 Interstate Ave., Grand Junction, Colorado. To preview this item call 888-230-8840 to schedule an appointment. All questions regarding this machine and/or the purchase of this machine are to be directed to JSA at the number above.

Hours: 331

33 2012 Genie GS1930 Scissor Lift

Location: Commerce City Colorado

S/N: GS3012A-113614

Engine: Electric

19ft. Height, 30in. Platform Width, 500lb. Platform Capacity, 36in. Platform Extension, AC Power Inverter, Zero Inside Turning Radius, Non-Marking Tires

This item is located at 5420 Dahlia St., Commerce City, Colorado. To preview this item call 888-230-8840 to schedule an appointment. All questions regarding this machine and/or the purchase of this machine are to be directed to JSA at the number above.

Hours: 334

34 2012 Genie GS1930 Scissor Lift

Location: Englewood Colorado

S/N: GS3012A-113623

Engine: Electric

19ft. Height, 30in. Platform Width, 500lb. Platform Capacity, 36in. Platform Extension, AC Power Inverter, Zero Inside Turning Radius, Non-Marking Tires

This item is located at 12550 E. Broncos Pkwy., Englewood, Colorado. To preview this item call 888-230-8840 to schedule an appointment. All questions regarding this machine and/or the purchase of this machine are to be directed to JSA at the number above.

Hours: 314

LOT # DESCRIPTION

35 2012 Genie GS1930 Scissor Lift

Location: Englewood Colorado

S/N: GS3012A-113587

Engine: Electric

19ft. Height, 30in. Platform Width, 500lb. Platform Capacity, 36in. Platform

Extension, AC Power Inverter, Zero Inside Turning Radius, Non-Marking Tires

This item is located at 12550 E. Broncos Pkwy., Englewood, Colorado. To preview this item call 888-230-8840 to schedule an appointment. All questions regarding this machine and/or the purchase of this machine are to be directed to JSA at the number above.

Hours: 384

36 2012 Genie GS1930 Scissor Lift

Location: Grand Junction Colorado

S/N: GS3012A-113596

Engine: Electric

19ft. Height, 30in. Platform Width, 500lb. Platform Capacity, 36in. Platform

Extension, AC Power Inverter, Zero Inside Turning Radius, Non-Marking Tires

This item is located at 2320 Interstate Ave., Grand Junction, Colorado. To preview this item call 888-230-8840 to schedule an appointment. All questions regarding this machine and/or the purchase of this machine are to be directed to JSA at the number above.

Hours: 302

37 2012 Genie GS1930 Scissor Lift

Location: Commerce City Colorado

S/N: GS3012A-113597

Engine: Electric

19ft. Height, 30in. Platform Width, 500lb. Platform Capacity, 36in. Platform

Extension, AC Power Inverter, Zero Inside Turning Radius, Non-Marking Tires

This item is located at 5420 Dahlia St., Commerce City, Colorado. To preview this item call 888-230-8840 to schedule an appointment. All questions regarding this machine and/or the purchase of this machine are to be directed to JSA at the number above.

Hours: 282

38 2012 Genie GS1930 Scissor Lift

Location: Englewood Colorado

S/N: GS3012A-113591

Engine: Electric

19ft. Height, 30in. Platform Width, 500lb. Platform Capacity, 36in. Platform

Extension, AC Power Inverter, Zero Inside Turning Radius, Non-Marking Tires

*This item is located at 12550 E. Broncos Pkwy., Englewood, Colorado. To preview this item call 888-230-8840 to schedule an appointment. All questions regarding this

LOT # DESCRIPTION

machine and/or the purchase of this machine are to be directed to JSA at the number above.*

Hours: 168

39 2013 Genie GS1930 Scissor Lift

Location: Lindon Utah

S/N: GS3013A-118637

Engine: Electric

19ft. Height, 30in. Platform Width, 500lb. Platform Capacity, 36in. Platform

Extension, AC Power Inverter, Zero Inside Turning Radius, Non-Marking Tires

This item is located at 1261 West 300 South, Lindon, Utah. To preview this item call 888-230-8840 to schedule an appointment. All questions regarding this machine and/or the purchase of this machine are to be directed to JSA at the number above.

Hours: 278

40 2013 Genie GS1930 Scissor Lift

Location: Commerce City Colorado

S/N: GS3013A-119569

Engine: Electric

19ft. Height, 30in. Platform Width, 500lb. Platform Capacity, 36in. Platform

Extension, AC Power Inverter, Zero Inside Turning Radius, Non-Marking Tires

This item is located at 5420 Dahlia St., Commerce City, Colorado. To preview this item call 888-230-8840 to schedule an appointment. All questions regarding this machine and/or the purchase of this machine are to be directed to JSA at the number above.

Hours: 194

41 2013 Genie GS1930 Scissor Lift

Location: Englewood Colorado

S/N: GS3013A119728

Engine: Electric

19ft. Height, 30in. Platform Width, 500lb. Platform Capacity, 36in. Platform

Extension, AC Power Inverter, Zero Inside Turning Radius, Non-Marking Tires

This item is located at 12550 E. Broncos Pkwy., Englewood, Colorado. To preview this item call 888-230-8840 to schedule an appointment. All questions regarding this machine and/or the purchase of this machine are to be directed to JSA at the number above.

Hours: 270

42 2012 Genie GS-2669RT 4x4 Rough Terrain Scissor Lif

Location: Commerce City Colorado

S/N: GS6912-741

Engine: Kubota W972-GL-ET Gas/Lp

26ft. Height, 69in. Platform Width, 1500lb. Platform Capacity, 5ft. Deck Extension, 40% Grade Ability

LOT #	DESCRIPTION
-------	-------------

This item is located at 5420 Dahlia St., Commerce City, Colorado. To preview this item call 888-230-8840 to schedule an appointment. All questions regarding this machine and/or the purchase of this machine are to be directed to JSA at the number above.

Hours: 1,817

43 2013 Genie GS3246 Scissor Lift

Location: Salt Lake City Utah

S/N: GS4613A-112793

Engine: Electric

32ft. Height, 46in. Platform Width, 700lb. Platform Capacity, 39in. Deck Extension, Zero Inside Turn Radius, AC Power Inverter, Non-Marking Tires

This item is located at 2051 N. Redwood Rd., Salt Lake City, Utah. To preview this item call 888-230-8840 to schedule an appointment. All questions regarding this machine and/or the purchase of this machine are to be directed to JSA at the number above.

Hours: 394

44 2013 Genie GS3246 Scissor Lift

Location: Ogden Utah

S/N: GS4613A-112900

Engine: Electric

32ft. Height, 46in. Platform Width, 700lb. Platform Capacity, 39in. Deck Extension, Zero Inside Turn Radius, AC Power Inverter, Non-Marking Tires

This item is located at 1850 W. 1350 S. Ogden, Utah. To preview this item call 888-230-8840 to schedule an appointment. All questions regarding this machine and/or the purchase of this machine are to be directed to JSA at the number above.

Hours: 321

45 2012 Genie GS3232 Scissor Lift

Location: Salt Lake City Utah

S/N: GS3212A-111490

Engine: Electric

32ft. Height, 32in. Platform Width, 500lb. Platform Capacity, 3ft. Deck Extension, AC Power Inverter, Zero Inside Turn Radius, Non-Marking Tires

This item is located at 2051 N. Redwood Rd., Salt Lake City, Utah. To preview this item call 888-230-8840 to schedule an appointment. All questions regarding this machine and/or the purchase of this machine are to be directed to JSA at the number above.

Hours: 231

46 2013 Genie GS2632 Scissor Lift

Location: Colorado Springs Colorado

S/N: GS3213A-113017

Engine: Electric

LOT # DESCRIPTION

26ft. Height, 32in. Platform Width, 500lb. Platform Capacity, 3ft. Deck Extension, AC Power Inverter, Non-Marking Tires

This item is located at 11211 E. Cheyenne Rd., Colorado Springs, Colorado. To preview this item call 888-230-8840 to schedule an appointment. All questions regarding this machine and/or the purchase of this machine are to be directed to JSA at the number above.

Hours: 255

47 2012 Genie GS2632 Scissor Lift

Location: Ogden Utah

S/N: GS3212A-98853

Engine: Electric

26ft. Height, 32in. Platform Width, 500lb. Platform Capacity, 3ft. Deck Extension, AC Power Inverter, Non-Marking Tires

This item is located at 1850 W. 1350 S. Ogden, Utah. To preview this item call 888-230-8840 to schedule an appointment. All questions regarding this machine and/or the purchase of this machine are to be directed to JSA at the number above.

Hours: 326

48 2012 Genie GS2632 Scissor Lift

Location: Lindon Utah

S/N: GS3212A-98863

Engine: Electric

26ft. Height, 32in. Platform Width, 500lb. Platform Capacity, 3ft. Deck Extension, AC Power Inverter, Non-Marking Tires

This item is located at 1261 West 300 South, Lindon, Utah. To preview this item call 888-230-8840 to schedule an appointment. All questions regarding this machine and/or the purchase of this machine are to be directed to JSA at the number above.

Hours: 283

49 2012 Genie GS2646 Scissor Lift

Location: Lindon Utah

S/N: GS4612A-110447

Engine: Electric

26ft. Height, 46in. Platform Width, 1,000lb. Platform Capacity, Deck Extension, AC Power Inverter, Zero Inside Turn Radius, Non-Marking Tires

This item is located at 1261 West 300 South, Lindon, Utah. To preview this item call 888-230-8840 to schedule an appointment. All questions regarding this machine and/or the purchase of this machine are to be directed to JSA at the number above.

Hours: 324

50 2012 Genie Z34/22N Articulating Boom Lift

Location: Commerce City Colorado

S/N: Z34N12-1014

Engine: Electric Transmission: Hydrostatic

LOT # DESCRIPTION

34ft. Height, 22ft. Reach, 500lb. Platform Capacity, 30% Grade Ability, 180 Degree Platform Rotation, Non-Marking Tires

This item is located at 5420 Dahlia St., Commerce City, Colorado. To preview this item call 888-230-8840 to schedule an appointment. All questions regarding this machine and/or the purchase of this machine are to be directed to JSA at the number above.

Hours: 406

51 2012 Genie Z30/20N Articulating Boom Lift

Location: Commerce City Colorado

S/N: Z30N12-13938

Engine: Electric Transmission: Hydrostatic

30ft. Height, 20ft. Reach, 500lb. Platform Capacity, 35% Grade Ability, Zero Tail Swing, Non-Marking Tires

This item is located at 5420 Dahlia St., Commerce City, Colorado. To preview this item call 888-230-8840 to schedule an appointment. All questions regarding this machine and/or the purchase of this machine are to be directed to JSA at the number above.

Hours: 406

52 2012 Genie S85 4x4 Boom Lift

Location: Englewood Colorado

S/N: S8512-9171

Engine: Deutz 74hp Diesel Transmission: Hydrostatic

85ft. Height, 76ft. Reach, 500lb. Platform Capacity, 45% Grade Ability

This item is located at 12550 E. Broncos Pkwy., Englewood, Colorado. To preview this item call 888-230-8840 to schedule an appointment. All questions regarding this machine and/or the purchase of this machine are to be directed to JSA at the number above.

Hours: 4,648

53 2011 Genie S65 4x4 Boom Lift

Location: Ogden Utah

S/N: S6011-21607

Engine: Deutz 48hp Diesel Transmission: Hydrostatic

65ft. Height, 56ft. Reach, 500lb. Basket Capacity, 45% Grade Ability

This item is located at 1850 W. 1350 S. Ogden, Utah. To preview this item call 888-230-8840 to schedule an appointment. All questions regarding this machine and/or the purchase of this machine are to be directed to JSA at the number above.

Hours: 4,160

54 2017 John Deere 333G Compact Track Loader

Location: Washougal Washington

S/N: 1T0333GMEHF319205

Engine: Yanmar 4TNV94FHT Diesel Transmission: Hydrostatic

LOT #	DESCRIPTION
-------	-------------

John Deere 84in. GP Bucket, Auxiliary Hydraulics, Q/C, EROPS, Rear View Camera, AM/FM, Heat, A/C, 18in. Rubber Tracks
Hours: 809

55 2014 Caterpillar 279D Compact Track Loader

Location: Spokane Washington
S/N: CAT0279DLGTL00565
Engine: Caterpillar 3.3 Turbo Diesel Transmission: Hydrostatic
80in GP Bucket, EROPS, AUX Hydraulics, Two Speed, High Flow Hydraulics, A/C, Digital Display, 18in Rubber Tracks
Hours: 3,197

56 John Deere 323DT Compact Track Loader

Location: Spokane Washington
S/N: 1T0323DJCCD216689
Engine: John Deere Diesel Transmission: Hydrostatic
GP Bucket (not pictured), OROPS, Rubber Tracks
Hours: 2,743

57 2016 Bobcat T590 Compact Track Loader

Location: Commerce City Colorado
S/N: ALJU19918
Engine: 66hp Diesel Transmission: Hydrostatic
GP Bucket, 2100lb. Capacity, EROPS, A/C, Heat, Joystick Control, 12in. Rubber Tracks
This item is located at 5420 Dahlia St., Commerce City, Colorado. To preview this item call 888-230-8840 to schedule an appointment. All questions regarding this machine and/or the purchase of this machine are to be directed to JSA at the number above.
Hours: 2,942

58 2014 Bobcat T590 Compact Track Loader

Location: Colorado Springs Colorado
S/N: ALJU12450
Engine: 66hp. Diesel Transmission: Hydrostatic
GP Bucket, 2100lb. Capacity, EROPS, A/C, Heat, Joystick Control, 12in. Rubber Tracks
This item is located at 11211 E. Cheyenne Rd., Colorado Springs, Colorado. To preview this item call 888-230-8840 to schedule an appointment. All questions regarding this machine and/or the purchase of this machine are to be directed to JSA at the number above.
Hours: 2,966

LOT # DESCRIPTION

59 2013 Bobcat T590 Compact Track Loader

Location: Commerce City Colorado

S/N: A3NR11292

Engine: 66hp Diesel Transmission: Hydrostatic

GP Bucket, 2100lb. Capacity, EROPS, A/C, Heat, Joystick Control, 12in. Rubber Tracks

This item is located at 5420 Dahlia St., Commerce City, Colorado. To preview this item call 888-230-8840 to schedule an appointment. All questions regarding this machine and/or the purchase of this machine are to be directed to JSA at the number above.

Hours: 2,877

59a 2014 Bobcat T590 Compact Track Loader

Location: Commerce City Colorado

S/N: ALJU11050

Engine: 66hp Diesel Transmission: Hydrostatic

GP Bucket, 2100lb. Capacity, EROPS, A/C, Heat, Joystick Control, 12in. Rubber Tracks

This item is located at 5420 Dahlia St., Commerce City, Colorado. To preview this item call 888-230-8840 to schedule an appointment. All questions regarding this machine and/or the purchase of this machine are to be directed to JSA at the number above.

Hours: 2,529

60 John Deere 4ft. Forks

Location: Washougal Washington

To Fit Deere 333G

61 John Deere 6-Way Dozer Blade

Location: Washougal Washington

8ft. Wide, To Fit Deere 333G

62 2015 Kubota KX080-4 Midi Hydraulic Excavator

Location: Washougal Washington

S/N: JKUK0803A01H31686

Engine: Kubota V3307 Diesel Transmission: Hydrostatic

28in. Dig Bucket, Hydraulic Thumb, Q/C, 8ft. 6in. Stick, 86in. 4-Way Adjustable Push Blade, EROPS, Cab Guard, A/C, Heat, AM/FM/CD, 18in. Triple Bar Tracks

Hours: 3,745

63 2016 John Deere 50G Mini Hydraulic Excavator

Location: Washougal Washington

S/N: 1FF050GXCGH284111

Engine: Yanmar 4NNPAC 2.19L Diesel Transmission: Hydrostatic

PSM 48in. Muck Bucket, Thumb, Q/C, 6ft. Stick, Articulating Boom, 78in. Push

LOT #	DESCRIPTION
-------	-------------

Blade, Open Canopy, 16in. Rubber Tracks
Hours: 1,729

64 2016 John Deere 35G Mini Hydraulic Excavator

Location: Washougal Washington
S/N: 1FF035GXAFK275651
Engine: Yanmar 3TNV88F 3cyl Diesel Transmission: Hydrostatic
Black Max 34in. Muck Bucket, Thumb, Q/C, 5ft. 6in. Stick, 66in. Push Blade,
Articulating Boom, OROPS, 12in. Rubber Tracks
Hours: 1,626

65 2014 Bobcat E26 Mini Hydraulic Excavator

Location: Commerce City Colorado
S/N: B33212381
Engine: 24hp Diesel Transmission: Hydrostatic
Tag 24in. Dig Bucket, Q/C, Push Blade, OROPS, Rubber Tracks
*This item is located at 5420 Dahlia St., Commerce City, Colorado. To preview this
item call 888-230-8840 to schedule an appointment. All questions regarding this
machine and/or the purchase of this machine are to be directed to JSA at the number
above.*
Hours: 1,874

66 2013 Bobcat E26 Mini Hydraulic Excavator

Location: Englewood Colorado
S/N: AJRY12111
Engine: 24hp Diesel Transmission: Hydrostatic
Tag 24in. Dig Bucket, Q/C, Push Blade, OROPS, Rubber Tracks
*This item is located at 12550 E. Broncos Pkwy., Englewood, Colorado. To preview
this item call 888-230-8840 to schedule an appointment. All questions regarding this
machine and/or the purchase of this machine are to be directed to JSA at the number
above.*
Hours: 2,247

67 2008 Ingersoll-Rand Airsource P185 Air Compressor

Location: Fort Collins Colorado
S/N: 4FVCABAA38U400753
Engine: John Deere 2.4L Diesel
185 CFM, Towable, Ball Hitch, *This item is located at 4228 E. Mulberry St., Fort
Collins, Colorado. To preview this item call 888-230-8840 to schedule an
appointment. All questions regarding this machine and/or the purchase of this
machine are to be directed to JSA at the number above.*** Title Delay**
Hours: 2,339

LOT # DESCRIPTION

68 2006 Ingersoll-Rand Airsource P185 Air Compressor

Location: Ogden Utah

S/N: 365262UAQB10

Engine: John Deere 2.4L Diesel

185 CFM, Towable, Ball Hitch

*This item is located at 1850 W. 1350 S. Ogden, Utah. To preview this item call 888-230-8840 to schedule an appointment. All questions regarding this machine and/or the purchase of this machine are to be directed to JSA at the number above.*** Title Delay**

Hours: 4,231

69 2006 Ingersoll-Rand Airsource P185 Air Compressor

Location: Lindon Utah

S/N: 365590UA0B10

Engine: John Deere 2.4L Diesel

185 CFM, Towable, Ball Hitch

*This item is located at 1261 West 300 South, Lindon, Utah. To preview this item call 888-230-8840 to schedule an appointment. All questions regarding this machine and/or the purchase of this machine are to be directed to JSA at the number above.*** Title Delay**

Hours: 3,259

70 2006 Ingersoll-Rand Airsource 160 Air Compressor

Location: Lindon Utah

S/N: 365549UAQB01

Engine: Kubota 4IRX3N2 2.4L Diesel

160 CFM, Towable, Ball Hitch

*This item is located at 1261 West 300 South, Lindon, Utah. To preview this item call 888-230-8840 to schedule an appointment. All questions regarding this machine and/or the purchase of this machine are to be directed to JSA at the number above.*** Title Delay**

Hours: 3,327

71 2014 Magnum MLT3060K Towable Light Tower

Location: Colorado Springs Colorado

S/N: 5AJLS1414EB404902

Engine: Kubota D1005 1.0L Diesel

4000 Watt, 60 Hz, 6 KW, 120/240 Volt, 50/25 Amp, 4 1000 Watt Lights, 30ft.

Mast, 3 Stabilizers, Ball Hitch, ST175/80D13 Tires

*This item is located at 11211 E. Cheyenne Rd., Colorado Springs, Colorado. To preview this item call 888-230-8840 to schedule an appointment. All questions regarding this machine and/or the purchase of this machine are to be directed to JSA at the number above.*** Title Delay**

Hours: 6,978

LOT # DESCRIPTION

72 2014 Magnum MLT3060K Towable Light Tower

Location: Commerce City Colorado

S/N: 5AJLS1416EB408238

Engine: Kubota D1005 1.0L Diesel

4000 Watt, 60 Hz, 6 KW, 120/240 Volt, 50/25 Amp, 4 1000 Watt Lights, 30ft.

Mast, 3 Stabilizers, Ball Hitch, ST175/80D13 Tires

*This item is located at 5420 Dahlia St., Commerce City, Colorado. To preview this item call 888-230-8840 to schedule an appointment. All questions regarding this machine and/or the purchase of this machine are to be directed to JSA at the number above.*** Title Delay**

Hours: 6,448

73 2013 Magnum MLT3060K Towable Light Tower

Location: Commerce City Colorado

S/N: 5AJLS1410DB309736

Engine: Kubota D1005 1.0L Diesel

4000 Watt, 60 Hz, 6 KW, 120/240 Volt, 50/25 Amp, 4 1000 Watt Lights, 30ft.

Mast, 3 Stabilizers, Ball Hitch, ST175/80D13 Tires

*This item is located at 5420 Dahlia St., Commerce City, Colorado. To preview this item call 888-230-8840 to schedule an appointment. All questions regarding this machine and/or the purchase of this machine are to be directed to JSA at the number above.*** Title Delay**

Hours: 6,124

74 2013 Magnum MLT3060K Towable Light Tower

Location: Fort Collins Colorado

S/N: 5AJLS1410DB312975

Engine: Kubota D1005 1.0L Diesel

4000 Watt, 60 Hz, 6 KW, 120/240 Volt, 50/25 Amp, 4 1000 Watt Lights, 30ft.

Mast, 3 Stabilizers, Ball Hitch, ST175/80D13 Tires

*This item is located at 4228 E. Mulberry St., Fort Collins, Colorado. To preview this item call 888-230-8840 to schedule an appointment. All questions regarding this machine and/or the purchase of this machine are to be directed to JSA at the number above.*** Title Delay**

Hours: 6,463

75 2001 Hyster H155XL2 Forklift

Location: Spokane Washington

S/N: F006V01635Z

Engine: Vortec V6 Lp

14,750lb. Capacity, 60in Forks, 212in. Height, 2-stage Mast, Side Shift, OROPS

Hours: 8,979

LOT # DESCRIPTION

76 2013 Doosan G25E-5 Forklift

Location: Washougal Washington

S/N: FBA08-1820-04366

Engine: Doosan G241E 2.4L Gas/Lp

4,500lb. Capacity, 189in. Height, 3-Stage Mast, 4ft. Forks, Side Shift, OROPS,
7.00-15 Non-Marking Front Tires, 6.50-10 Non-Marking Rear Tires, *Intermittent
Starting Issue*

Hours: 1,804

76a Toyota 8FGU25 Forklift

Location: Washougal Washington

S/N: 50260

Engine: Gas/Lp

4,500lb. Capacity, 189in. Height, 3 Stage Mast, 42in. Forks, Side Shift, OROPS,
7.00-12 Front Tires, 6.00-9 Rear Tires

Hours: 2,649

77 2008 Mitsubishi FG25N Forklift

Location: Salt Lake City Utah

S/N: AF17D20274

Engine: Lp

4,500lb. Capacity, 188in. Height, 3 Stage Mast, 7ft. Forks, Side Shift, 6 Degree
Rear Tilt, OROPS, 7.00-12 Non-Marking Front Tires, 6.00-9 Non-Marking Rear
Tires*This item is located at 2051 N. Redwood Rd., Salt Lake City, Utah. To preview
this item call 888-230-8840 to schedule an appointment. All questions regarding this
machine and/or the purchase of this machine are to be directed to JSA at the number
above.*

Hours: 3,518

78 Clark TW30B Forklift

Location: Washougal Washington

S/N: TW23594923301074

Engine: Electric

3,000lb. Capacity, 130in. Height, Single Stage Mast, 3ft. Forks, OROPS, General
7000 Plus Charger

Hours: 940

79 2013 JLG G12-55A 4x4 Telescopic Forklift

Location: Fort Collins Colorado

S/N: 0160051239

Engine: Cummins 4cyl Diesel Transmission: Powershift

12,000lb. Capacity, 55ft. Height, 42ft. Reach, 2 Outriggers, Crab Steer, OROPS,
400/75-28 Tires

*This item is located at 4228 E. Mulberry St., Fort Collins, Colorado. To preview

LOT # DESCRIPTION

this item call 888-230-8840 to schedule an appointment. All questions regarding this machine and/or the purchase of this machine are to be directed to JSA at the number above.*

Hours: 7,427

80 2013 JLG G12-55A 4x4 Telescopic Forklift

Location: Fort Collins Colorado

S/N: 0160055659

Engine: Cummins 4cyl Diesel Transmission: Powershift

12,000lb. Capacity, 55ft. Height, 42ft. Reach, 2 Outriggers, Crab Steer, OROPS, 400/75-28 Tires

This item is located at 4228 E. Mulberry St., Fort Collins, Colorado. To preview this item call 888-230-8840 to schedule an appointment. All questions regarding this machine and/or the purchase of this machine are to be directed to JSA at the number above.

Hours: 4,974

81 2012 JLG G12-55A 4x4 Telescopic Forklift

Location: Commerce City Colorado

S/N: 0160044775

Engine: Cummins 4cyl Diesel Transmission: Powershift

12,000lb. Capacity, 55ft. Height, 42ft. Reach, 2 Outriggers, Crab Steer, OROPS, 400/75-28 Tires

This item is located at 5420 Dahlia St., Commerce City, Colorado. To preview this item call 888-230-8840 to schedule an appointment. All questions regarding this machine and/or the purchase of this machine are to be directed to JSA at the number above.

Hours: 5,821

81a 2014 JLG G12-55A 4x4 Telescopic Forklift

Location: Commerce City Colorado

S/N: 160061175

Engine: Cummins 4cyl Diesel Transmission: Powershift

12,000lb. Capacity, 55ft. Height, 42ft. Reach, 2 Outriggers, Crab Steer, EROPS, 400/75-28 Tires

This item is located at 5420 Dahlia St., Commerce City, Colorado. To preview this item call 888-230-8840 to schedule an appointment. All questions regarding this machine and/or the purchase of this machine are to be directed to JSA at the number above.

Hours: 6,361

82 2013 JLG G10-55A 4x4 Telescopic Forklift

Location: Salt Lake City Utah

S/N: 0160055544

Engine: Cummins OSB 4.5 4cyl Diesel Transmission: Power Shift

LOT # DESCRIPTION

10,000lb. Capacity, 54ft. Height, 42ft. Reach, 4ft. Forks, 2 Outriggers, Crab Steer, EROPS, A/C, Heat, 14.00-24 Foam Filled Tires

This item is located at 2051 N. Redwood Rd., Salt Lake City, Utah. To preview this item call 888-230-8840 to schedule an appointment. All questions regarding this machine and/or the purchase of this machine are to be directed to JSA at the number above.

Hours: 6,864

83 2011 Skyjack VR1056D 4x4 Telescopic Forklift

Location: Commerce City Colorado

S/N: 87300078

Engine: Cummins 110hp Diesel Transmission: Powershift

10,000lb. Capacity, 56ft. Height, 41ft. Reach, 2 Outriggers, OROPS

This item is located at 5420 Dahlia St., Commerce City, Colorado. To preview this item call 888-230-8840 to schedule an appointment. All questions regarding this machine and/or the purchase of this machine are to be directed to JSA at the number above.

Hours: 3,642

84 2012 Genie S85 4x4 Boom Lift

Location: Salt Lake City Utah

S/N: S8512-9172

Engine: Deutz 74hp Diesel Transmission: Hydrostatic

85ft. Height, 76ft. Reach, 500lb. Platform Capacity, 45% Grade Ability

This item is located at 2051 N. Redwood Rd., Salt Lake City, Utah. To preview this item call 888-230-8840 to schedule an appointment. All questions regarding this machine and/or the purchase of this machine are to be directed to JSA at the number above.

Hours: 4,576

85 2012 Genie S65 4x4 Boom Lift

Location: Salt Lake City Utah

S/N: S6012-23987

Engine: Deutz 48hp Diesel Transmission: Hydrostatic

65ft. Height, 56ft. Reach, 500lb. Basket Capacity, 45% Grade Ability

This item is located at 2051 N. Redwood Rd., Salt Lake City, Utah. To preview this item call 888-230-8840 to schedule an appointment. All questions regarding this machine and/or the purchase of this machine are to be directed to JSA at the number above.

Hours: 4,519

86 2011 Genie Z45/25 4x4 Articulating Boom Lift

Location: Pueblo Colorado

S/N: Z452511A-40871

Engine: 4cyl Gas/Lp Transmission: Hydrostatic

LOT # DESCRIPTION

45ft. Height, 25ft. Reach, 500lb. Basket Capacity, 45% Grade Ability

This item is located at 4125 N. Elizabeth St., Pueblo, Colorado. To preview this item call 888-230-8840 to schedule an appointment. All questions regarding this machine and/or the purchase of this machine are to be directed to JSA at the number above.

Hours: 3,122

87 2008 Genie Z45/25 4x4 Articulating Boom Lift

Location: Pueblo Colorado

S/N: Z452508A 38168

Engine: 4cyl Gas/Lp Transmission: Hydrostatic

45ft. Height, 25ft. Reach, 500lb. Basket Capacity, 45% Grade Ability

This item is located at 4125 N. Elizabeth St., Pueblo, Colorado. To preview this item call 888-230-8840 to schedule an appointment. All questions regarding this machine and/or the purchase of this machine are to be directed to JSA at the number above.

Hours: 3,114

88 2013 Genie Z40/23N RJ Articulating Boom Lift

Location: Commerce City Colorado

S/N: Z40N13-1965

Engine: Electric Transmission: Hydrostatic

40ft. Height, 23ft. Reach, 500lb. Platform Capacity, 30% Grade Ability, 180 Degree Platform Rotation, Non-Marking Tires

This item is located at 5420 Dahlia St., Commerce City, Colorado. To preview this item call 888-230-8840 to schedule an appointment. All questions regarding this machine and/or the purchase of this machine are to be directed to JSA at the number above.

Hours: 675

89 2011 JLG E400AJPN Articulating Boom Lift

Location: Salt Lake City Utah

S/N: 0300149943

Engine: Electric Transmission: Hydrostatic

40ft. Height, 22ft. Reach, 500lb. Platform Capacity, 30% Grade Ability, 4in. Tail Swing, 22x6x17.75 Non-Marking Front Tires, 25x7x12 Non-Marking Rear Tires

This item is located at 2051 N. Redwood Rd., Salt Lake City, Utah. To preview this item call 888-230-8840 to schedule an appointment. All questions regarding this machine and/or the purchase of this machine are to be directed to JSA at the number above.

Hours: 1,020

90 2012 JLG M4069LE 4x4 Scissor Lift

Location: Commerce City Colorado

S/N: 0200208958

LOT # DESCRIPTION

Engine: Hybrid

40ft. Height, 69in. Platform Width, 800lb. Platform Capacity, 45% Grade Ability,
3ft. Deck Extension, Non-Marking Tires

*This item is located at 5420 Dahlia St., Commerce City, Colorado. To preview this
item call 888-230-8840 to schedule an appointment. All questions regarding this
machine and/or the purchase of this machine are to be directed to JSA at the number
above.*

Hours: 381

91 2012 Skyjack SJ6832RT Rough Terrain Scissor Lift

Location: Englewood Colorado

S/N: 37003752

Engine: Kubota 31hp Gas/Lp Transmission: Hydrostatic

32ft. Height, 68in. Platform Width, 1000lb. Platform Capacity, 5ft. Deck Extension,
40% Grade Ability, AC Power Inverter

*This item is located at 12550 E. Broncos Pkwy., Englewood, Colorado. To preview
this item call 888-230-8840 to schedule an appointment. All questions regarding this
machine and/or the purchase of this machine are to be directed to JSA at the number
above.*

Hours: 1,330

92 2013 Genie GS3246 Scissor Lift

Location: Ogden Utah

S/N: GS4613A-112722

Engine: Electric

32ft. Height, 46in. Platform Width, 700lb. Platform Capacity, 39in. Deck Extension,
Zero Inside Turn Radius, AC Power Inverter, Non-Marking Tires

*This item is located at 1850 W. 1350 S. Ogden, Utah. To preview this item call
888-230-8840 to schedule an appointment. All questions regarding this machine
and/or the purchase of this machine are to be directed to JSA at the number above.*

Hours: 192

93 2013 Genie GS3246 Scissor Lift

Location: Lindon Utah

S/N: GS4613A-112956

Engine: Electric

32ft. Height, 46in. Platform Width, 700lb. Platform Capacity, 39in. Deck Extension,
Zero Inside Turn Radius, AC Power Inverter, Non-Marking Tires

*This item is located at 1261 West 300 South, Lindon, Utah. To preview this item
call 888-230-8840 to schedule an appointment. All questions regarding this machine
and/or the purchase of this machine are to be directed to JSA at the number above.*

Hours: 330

LOT # DESCRIPTION

94 2013 Genie GS3246 Scissor Lift

Location: Colorado Springs Colorado

S/N: GS4613A-112962

Engine: Electric

32ft. Height, 46in. Platform Width, 700lb. Platform Capacity, 39in. Deck Extension, Zero Inside Turn Radius, AC Power Inverter, Non-Marking Tires

This item is located at 11211 E. Cheyenne Rd., Colorado Springs, Colorado. To preview this item call 888-230-8840 to schedule an appointment. All questions regarding this machine and/or the purchase of this machine are to be directed to JSA at the number above.

Hours: 324

95 2013 Genie GS3232 Scissor Lift

Location: Commerce City Colorado

S/N: GS3213A-112958

Engine: Electric

32ft. Height, 32in. Platform Width, 500lb. Platform Capacity, 3ft. Deck Extension, AC Power Inverter, Zero Inside Turn Radius, Non-Marking Tires

This item is located at 5420 Dahlia St., Commerce City, Colorado. To preview this item call 888-230-8840 to schedule an appointment. All questions regarding this machine and/or the purchase of this machine are to be directed to JSA at the number above.

Hours: 482

96 2013 Genie GS3232 Scissor Lift

Location: Salt Lake City Utah

S/N: GS3213A-113213

Engine: Electric

32ft. Height, 32in. Platform Width, 500lb. Platform Capacity, 3ft. Deck Extension, AC Power Inverter, Zero Inside Turn Radius, Non-Marking Tires

This item is located at 2051 N. Redwood Rd., Salt Lake City, Utah. To preview this item call 888-230-8840 to schedule an appointment. All questions regarding this machine and/or the purchase of this machine are to be directed to JSA at the number above.

Hours: 279

97 2012 Genie GS-2669RT 4x4 Rough Terrain Scissor Lif

Location: Colorado Springs Colorado

S/N: GS6912-719

Engine: Kubota W972-GL-ET Gas/Lp

26ft. Height, 69in. Platform Width, 1500lb. Platform Capacity, 5ft. Deck Extension, 40% Grade Ability

*This item is located at 11211 E. Cheyenne Rd., Colorado Springs, Colorado. To preview this item call 888-230-8840 to schedule an appointment. All questions

LOT #	DESCRIPTION
-------	-------------

regarding this machine and/or the purchase of this machine are to be directed to JSA at the number above.*

Hours: 1,426

98 2012 Genie GS-2669RT 4x4 Rough Terrain Scissor Lif

Location: Commerce City Colorado

S/N: GS6912-743

Engine: Kubota W972-GL-ET Gas/Lp

26ft. Height, 69in. Platform Width, 1500lb. Platform Capacity, 5ft. Deck Extension, 40% Grade Ability

This item is located at 5420 Dahlia St., Commerce City, Colorado. To preview this item call 888-230-8840 to schedule an appointment. All questions regarding this machine and/or the purchase of this machine are to be directed to JSA at the number above.

Hours: 1,728

99 2013 Genie GS2646 Scissor Lift

Location: Lindon Utah

S/N: GS4613A-112698

Engine: Electric

26ft. Height, 46in. Platform Width, 1,000lb. Platform Capacity, Deck Extension, AC Power Inverter, Zero Inside Turn Radius, Non-Marking Tires

This item is located at 1261 West 300 South, Lindon, Utah. To preview this item call 888-230-8840 to schedule an appointment. All questions regarding this machine and/or the purchase of this machine are to be directed to JSA at the number above.

Hours: 331

100 2013 Genie GS2632 Scissor Lift

Location: Lindon Utah

S/N: GS3213A-114035

Engine: Electric

26ft. Height, 32in. Platform Width, 500lb. Platform Capacity, 3ft. Deck Extension, AC Power Inverter, Non-Marking Tires

This item is located at 1261 West 300 South, Lindon, Utah. To preview this item call 888-230-8840 to schedule an appointment. All questions regarding this machine and/or the purchase of this machine are to be directed to JSA at the number above.

Hours: 401

101 2013 Genie GS2632 Scissor Lift

Location: Lindon Utah

S/N: GS3213A-114016

Engine: Electric

26ft. Height, 32in. Platform Width, 500lb. Platform Capacity, 3ft. Deck Extension, AC Power Inverter, Non-Marking Tires

*This item is located at 1261 West 300 South, Lindon, Utah. To preview this item

LOT # DESCRIPTION

call 888-230-8840 to schedule an appointment. All questions regarding this machine and/or the purchase of this machine are to be directed to JSA at the number above.*
Hours: 325

102 2013 Genie GS1930 Scissor Lift

Location: Salt Lake City Utah

S/N: GS3013A-118601

Engine: Electric

19ft. Height, 30in. Platform Width, 500lb. Platform Capacity, 36in. Platform

Extension, AC Power Inverter, Zero Inside Turning Radius, Non-Marking Tires

This item is located at 2051 N. Redwood Rd., Salt Lake City, Utah. To preview this item call 888-230-8840 to schedule an appointment. All questions regarding this machine and/or the purchase of this machine are to be directed to JSA at the number above.

Hours: 444

103 2013 Genie GS1930 Scissor Lift

Location: Salt Lake City Utah

S/N: GS3013A-118634

Engine: Electric

19ft. Height, 30in. Platform Width, 500lb. Platform Capacity, 36in. Platform

Extension, AC Power Inverter, Zero Inside Turning Radius, Non-Marking Tires

This item is located at 2051 N. Redwood Rd., Salt Lake City, Utah. To preview this item call 888-230-8840 to schedule an appointment. All questions regarding this machine and/or the purchase of this machine are to be directed to JSA at the number above.

Hours: 314

104 2013 Genie GS1930 Scissor Lift

Location: Salt Lake City Utah

S/N: GS3013A-119706

Engine: Electric

19ft. Height, 30in. Platform Width, 500lb. Platform Capacity, 36in. Platform

Extension, AC Power Inverter, Zero Inside Turning Radius, Non-Marking Tires

This item is located at 2051 N. Redwood Rd., Salt Lake City, Utah. To preview this item call 888-230-8840 to schedule an appointment. All questions regarding this machine and/or the purchase of this machine are to be directed to JSA at the number above.

Hours: 349

105 2013 Genie GS1930 Scissor Lift

Location: Englewood Colorado

S/N: GS3013A-119447

Engine: Electric

19ft. Height, 30in. Platform Width, 500lb. Platform Capacity, 36in. Platform

LOT # DESCRIPTION

Extension, AC Power Inverter, Zero Inside Turning Radius, Non-Marking Tires
This item is located at 12550 E. Broncos Pkwy., Englewood, Colorado. To preview this item call 888-230-8840 to schedule an appointment. All questions regarding this machine and/or the purchase of this machine are to be directed to JSA at the number above.
Hours: 227

106 2013 Genie GS1930 Scissor Lift

Location: Pueblo Colorado
S/N: GS3013A-119758
Engine: Electric
19ft. Height, 30in. Platform Width, 500lb. Platform Capacity, 36in. Platform
Extension, AC Power Inverter, Zero Inside Turning Radius, Non-Marking Tires
This item is located at 4125 N. Elizabeth St., Pueblo, Colorado. To preview this item call 888-230-8840 to schedule an appointment. All questions regarding this machine and/or the purchase of this machine are to be directed to JSA at the number above.
Hours: 265

107 2013 Genie GS1930 Scissor Lift

Location: Commerce City Colorado
S/N: GS3013A-119761
Engine: Electric
19ft. Height, 30in. Platform Width, 500lb. Platform Capacity, 36in. Platform
Extension, AC Power Inverter, Zero Inside Turning Radius, Non-Marking Tires
This item is located at 5420 Dahlia St., Commerce City, Colorado. To preview this item call 888-230-8840 to schedule an appointment. All questions regarding this machine and/or the purchase of this machine are to be directed to JSA at the number above.
Hours: 208

108 2013 Genie GS1930 Scissor Lift

Location: Commerce City Colorado
S/N: GS3013A-119762
Engine: Electric
19ft. Height, 30in. Platform Width, 500lb. Platform Capacity, 36in. Platform
Extension, AC Power Inverter, Zero Inside Turning Radius, Non-Marking Tires
This item is located at 5420 Dahlia St., Commerce City, Colorado. To preview this item call 888-230-8840 to schedule an appointment. All questions regarding this machine and/or the purchase of this machine are to be directed to JSA at the number above.
Hours: 321

LOT # DESCRIPTION

109 2013 Genie GS1930 Scissor Lift

Location: Commerce City Colorado

S/N: GS3013A-119453

Engine: Electric

19ft. Height, 30in. Platform Width, 500lb. Platform Capacity, 36in. Platform

Extension, AC Power Inverter, Zero Inside Turning Radius, Non-Marking Tires

This item is located at 5420 Dahlia St., Commerce City, Colorado. To preview this item call 888-230-8840 to schedule an appointment. All questions regarding this machine and/or the purchase of this machine are to be directed to JSA at the number above.

Hours: 264

110 2013 Genie GS1930 Scissor Lift

Location: Ogden Utah

S/N: GS3013A-121595

Engine: Electric

19ft. Height, 30in. Platform Width, 500lb. Platform Capacity, 36in. Platform

Extension, AC Power Inverter, Zero Inside Turning Radius, Non-Marking Tires

This item is located at 1850 W. 1350 S. Ogden, Utah. To preview this item call 888-230-8840 to schedule an appointment. All questions regarding this machine and/or the purchase of this machine are to be directed to JSA at the number above.

Hours: 322

111 2013 Genie GR-20 Man Lift

Location: Commerce City Colorado

S/N: GR13-25573

Engine: Electric

20ft. Height, 350lb. Platform Capacity, 30% Grade Ability, Zero Inside Turn

Radius, Rotating Jib, 31in. Platform Width, Self Propelled, Non-Marking Tires

This item is located at 5420 Dahlia St., Commerce City, Colorado. To preview this item call 888-230-8840 to schedule an appointment. All questions regarding this machine and/or the purchase of this machine are to be directed to JSA at the number above.

Hours: 273

112 2013 Genie GR-20 Man Lift

Location: Commerce City Colorado

S/N: GR13-26325

Engine: Electric

20ft. Height, 350lb. Platform Capacity, 30% Grade Ability, Zero Inside Turn

Radius, Rotating Jib, 31in. Platform Width, Self Propelled, Non-Marking Tires

*This item is located at 5420 Dahlia St., Commerce City, Colorado. To preview this item call 888-230-8840 to schedule an appointment. All questions regarding this machine and/or the purchase of this machine are to be directed to JSA at the number

LOT # DESCRIPTION

above.*

Hours: 266

113 2012 Genie GR-20 Man Lift

Location: Colorado Springs Colorado

S/N: GR12-23109

Engine: Electric

20ft. Height, 350lb. Platform Capacity, 30% Grade Ability, Zero Inside Turn Radius, Rotating Jib, 31in. Platform Width, Self Propelled, Non-Marking Tires

This item is located at 11211 E. Cheyenne Rd., Colorado Springs, Colorado. To preview this item call 888-230-8840 to schedule an appointment. All questions regarding this machine and/or the purchase of this machine are to be directed to JSA at the number above.

Hours: 524

114 2012 Genie GR-20 Man Lift

Location: Commerce City Colorado

S/N: GR12-23008

Engine: Electric

20ft. Height, 350lb. Platform Capacity, 30% Grade Ability, Zero Inside Turn Radius, Rotating Jib, 31in. Platform Width, Self Propelled, Non-Marking Tires

This item is located at 5420 Dahlia St., Commerce City, Colorado. To preview this item call 888-230-8840 to schedule an appointment. All questions regarding this machine and/or the purchase of this machine are to be directed to JSA at the number above.

Hours: 287

115 2012 Genie GR-20 Man Lift

Location: Commerce City Colorado

S/N: GR12-23332

Engine: Electric

20ft. Height, 350lb. Platform Capacity, 30% Grade Ability, Zero Inside Turn Radius, Rotating Jib, 31in. Platform Width, Self Propelled, Non-Marking Tires

This item is located at 5420 Dahlia St., Commerce City, Colorado. To preview this item call 888-230-8840 to schedule an appointment. All questions regarding this machine and/or the purchase of this machine are to be directed to JSA at the number above.

Hours: 255

116 2012 Genie GR-20 Man Lift

Location: Colorado Springs Colorado

S/N: GR12-24405

Engine: Electric

20ft. Height, 350lb. Platform Capacity, 30% Grade Ability, Zero Inside Turn Radius, Rotating Jib, 31in. Platform Width, Self Propelled, Non-Marking Tires

LOT # DESCRIPTION

This item is located at 11211 E. Cheyenne Rd., Colorado Springs, Colorado. To preview this item call 888-230-8840 to schedule an appointment. All questions regarding this machine and/or the purchase of this machine are to be directed to JSA at the number above.

Hours: 133

117 2012 Genie GR-20 Man Lift

Location: Colorado Springs Colorado

S/N: GR12-24574

Engine: Electric

20ft. Height, 350lb. Platform Capacity, 30% Grade Ability, Zero Inside Turn Radius, Rotating Jib, 31in. Platform Width, Self Propelled, Non-Marking Tires

This item is located at 11211 E. Cheyenne Rd., Colorado Springs, Colorado. To preview this item call 888-230-8840 to schedule an appointment. All questions regarding this machine and/or the purchase of this machine are to be directed to JSA at the number above.

Hours: 224

118 2012 Genie GR-20 Man Lift

Location: Englewood Colorado

S/N: GR12-24942

Engine: Electric

20ft. Height, 350lb. Platform Capacity, 30% Grade Ability, Zero Inside Turn Radius, Rotating Jib, 31in. Platform Width, Self Propelled, Non-Marking Tires

This item is located at 12550 E. Broncos Pkwy., Englewood, Colorado. To preview this item call 888-230-8840 to schedule an appointment. All questions regarding this machine and/or the purchase of this machine are to be directed to JSA at the number above.

Hours: 241

119 2011 Laymor 8HC Broom

Location: Lindon Utah

S/N: 33285

Engine: Kubota Diesel Transmission: Hydrostatic

6ft. Angle Broom, OROPS, Canopy, Water System, Towable, Ball Hitch, 265/75R14 Tires

*This item is located at 1261 West 300 South, Lindon, Utah. To preview this item call 888-230-8840 to schedule an appointment. All questions regarding this machine and/or the purchase of this machine are to be directed to JSA at the number above.*** Title Delay**

Hours: 946

120 2013 Case 580N 4x4 Loader Backhoe

Location: Spokane Washington

S/N: JJGN580NCDC580109

LOT # DESCRIPTION

Engine: 4 Cyl Turbo Diesel Transmission: Shuttle Shift
 82in 4-in1 Bucket, Extend-A-Hoe, 24in Wain Ray Dig Bucket, EROPS, Cab, A/C,
 Digital Display, Front/Rear Work Lights, 12-16.5 Front Tires, 19.5-24 Rear Tires
 Hours: 4,354

121 2011 John Deere 310J 4x4 Loader Backhoe

Location: Salt Lake City Utah
 S/N: 1T0310JXHB0196943
 Engine: John Deere 4045D 72hp Diesel Transmission: Powershift
 GP Bucket, EROPS, Cab, A/C, Heat, Extend-a-hoe, Wain Roy 24in. Dig Bucket,
 300/70R16.5IND Front Tires, 19.5L-24 Rear Tires
 *This item is located at 2051 N. Redwood Rd., Salt Lake City, Utah. To preview
 this item call 888-230-8840 to schedule an appointment. All questions regarding this
 machine and/or the purchase of this machine are to be directed to JSA at the number
 above.*
 Hours: 3,365

122 2015 Komatsu WA270-7 Wheel Loader

Location: Commerce City Colorado
 S/N: 80869
 Engine: 148hp Diesel Transmission: Powershift
 3yd GP Bucket w/Teeth, EROPS, Cab, Rear View Camera, A/C, Heat, AM/FM
 *This item is located at 5420 Dahlia St., Commerce City, Colorado. To preview this
 item call 888-230-8840 to schedule an appointment. All questions regarding this
 machine and/or the purchase of this machine are to be directed to JSA at the number
 above.*
 Hours: 6,262

123 2010 John Deere 544K Wheel Loader

Location: Washougal Washington
 S/N: 1DW544KZCA0633695
 Engine: John Deere 6068 Diesel Transmission: Power Shift
 JRB 3yd. GP Bucket, EROPS, Cab, Heat, A/C, AM/FM, 20.5R25 Tires
 Hours: 7,048

124 2010 John Deere 624K Wheel Loader

Location: Washougal Washington
 S/N: 1DW624KPCA0633527
 Engine: John Deere 6068 Diesel Transmission: Power Shift
 ESCO 106in. GP Bucket, JRB Q/C, EROPS, Cab, Heat, A/C, Heated Mirrors,
 28L-26 Tires
 Hours: 13,650

LOT # DESCRIPTION

125 2007 John Deere 544J Wheel Loader

Location: Spokane Washington

S/N: DW544JZ595230

Engine: John Deere 6cyl Turbo Diesel Transmission: Powershift

102in GP Bucket, EROPS, Cab, Heat, A/C, AM/FM/CD, Ride Control, 20.5-25

Tires

Hours: 8,496

126 1997 Caterpillar 924F Wheel Loader

Location: Spokane Washington

S/N: 5NN00934

Engine: Caterpillar 4cyl Turbo Diesel Transmission: Powershift

96in. GP Bucket, EROPS, Cab, Heat, Air Ride Seat, 17.5-25L Tires

Hours: 5,816

127 1996 Caterpillar 924F Wheel Loader

Location: Washougal Washington

S/N: 5NN00884

Engine: Caterpillar 3114 4cyl Diesel Transmission: Power Shift

94in. GP Bucket, EROPS, Heat, 17.5R25 Tires

Hours: 9,937

133 2013 Volvo T/A Gen Set/Switch Trailer

Location: Spokane Washington

VIN: D16070989C3A

Engine: Volvo 16L Diesel

605 Kw Volvo Penta Gen-Set w/ 928 Hrs

- Volvo 16L Turbo Diesel Engine

- Stamford Continuous 625KVA Generator

- On Board Fuel Tank

- 480V/3-Phase Master Safety Switch w/Deep Sea DSE7310 Electronic Control Board

- V-Blox 480V Storage Board

- Siemens 480Y/277V Master Breaker Panel Board

-(2) 100 Amp/3-Pole Breakers

-(2) 60 Amp/3-pole Spares

- 300 Amp Breaker For Feeder

- Ingersoll Rand Air Compressor w/SS5 Twin Piston Head, 230V Electric Motor

- (2) Pneumatic Grease Barrels, (1) Hand Pump Grease Barrel

- (2) Pneumatic Reels w/Grease Hose & Fittings

- Metal Work Bench w/Peg-Board Tool Storage & Vise, Metal Storage Cabinet, Flammable Materials Cabinet, Wall Mounted Metal Bolt Organizers

- Square D Single Phase Transformer, 25 KVA, Insulated System

- Front Office w/Built-In Counters, (2) File Cabinets, A/C Unit, (2) Sets Windows

LOT # DESCRIPTION

For Trailer: Spring Ride Suspension, Side Man Door, Floor Vents For Generator,
Air Brakes**Title Delay**

135 2015 MMD SDG25S Towable Generator

Location: Colorado Springs Colorado

S/N: 1238E10155

Engine: Isuzu 4cyl Diesel

25 Kva, 240/480 Volt, 60 Hz, 3 Phase, Ball Hitch

*This item is located at 11211 E. Cheyenne Rd., Colorado Springs, Colorado. To
preview this item call 888-230-8840 to schedule an appointment. All questions
regarding this machine and/or the purchase of this machine are to be directed to JSA
at the number above.*** Title Delay**

Hours: 15,719

135a 2014 MMD SDG25S Towable Generator

Location: Colorado Springs Colorado

S/N: 5UABU0914DV002344

Engine: Isuzu 4cyl Diesel

25 Kva, 240/480 Volt, 60 Hz, 3 Phase, Ball Hitch

*This item is located at 11211 E. Cheyenne Rd., Colorado Springs, Colorado. To
preview this item call 888-230-8840 to schedule an appointment. All questions
regarding this machine and/or the purchase of this machine are to be directed to JSA
at the number above.*** Title Delay**

Hours: 19,014

135b 2013 MMD SDG25S Towable Generator

Location: Colorado Springs Colorado

S/N: 5UABU0918CV001728

Engine: Isuzu 4cyl Diesel

25 Kva, 240/480 Volt, 60 Hz, 3 Phase, Ball Hitch

*This item is located at 11211 E. Cheyenne Rd., Colorado Springs, Colorado. To
preview this item call 888-230-8840 to schedule an appointment. All questions
regarding this machine and/or the purchase of this machine are to be directed to JSA
at the number above.*** Title Delay**

Hours: 13,471

136 2012 MMD SDG25S Towable Generator

Location: Colorado Springs Colorado

S/N: 1238B10499

Engine: Isuzu 4cyl Diesel

25 Kva, 240/480 Volt, 60 Hz, 3 Phase, Ball Hitch

*This item is located at 11211 E. Cheyenne Rd., Colorado Springs, Colorado. To
preview this item call 888-230-8840 to schedule an appointment. All questions
regarding this machine and/or the purchase of this machine are to be directed to JSA

LOT #	DESCRIPTION
-------	-------------

at the number above.*** Title Delay**
Hours: 10,423

136a 2012 MMD SDG25S Towable Generator

Location: Colorado Springs Colorado

S/N: 5UABU0311CV001733

Engine: Isuzu 4cyl Diesel

25 Kva, 240/480 Volt, 60 Hz, 3 Phase, Ball Hitch

*This item is located at 11211 E. Cheyenne Rd., Colorado Springs, Colorado. To preview this item call 888-230-8840 to schedule an appointment. All questions regarding this machine and/or the purchase of this machine are to be directed to JSA at the number above.*** Title Delay**

Hours: 12,191

137 2018 Multiquip WT5C T/A Water Trailer

Location: Washougal Washington

S/N: 4GNBM1221JB050662

500 Gallon Tank, Multiquip Water Pump w/Honda GX120 Gas Engine, Hose Storage Rack, Pintle Hitch, ST205/75D14 Tires** Title Delay**

138 2016 Multiquip WT5C T/A Water Trailer

Location: Washougal Washington

S/N: 4GNBM1220GB042206

500 Gallon Tank, Water Pump w/Honda GX120 Gas Motor, Ball Hitch, Spring Suspension, St205/17.5D14 Tires

140 2012 Magnum MLT3060K Towable Light Tower

Location: Ogden Utah

S/N: 5AJLS1611CB003589

Engine: Kubota D1005 1.0L Diesel

4000 Watt, 60 Hz, 6 KW, 120/240 Volt, 50/25 Amp, 4 1000 Watt Lights, 30ft.

Mast, 3 Stabilizers, Ball Hitch, ST175/80D13 Tires

*This item is located at 1850 W. 1350 S. Ogden, Utah. To preview this item call 888-230-8840 to schedule an appointment. All questions regarding this machine and/or the purchase of this machine are to be directed to JSA at the number above.*** Title Delay**

Hours: 6,462

141 2012 Magnum MLT3060K Towable Light Tower

Location: Ogden Utah

S/N: 5AJLS161XCB003588

Engine: Kubota D1005 1.0L Diesel

4000 Watt, 60 Hz, 6 KW, 120/240 Volt, 50/25 Amp, 4 1000 Watt Lights, 30ft.

Mast, 3 Stabilizers, Ball Hitch, ST175/80D13 Tires

*This item is located at 1850 W. 1350 S. Ogden, Utah. To preview this item call

LOT # DESCRIPTION

888-230-8840 to schedule an appointment. All questions regarding this machine and/or the purchase of this machine are to be directed to JSA at the number above.*** Title Delay**
Hours: 5,852

142 2012 Magnum MLT3060K Towable Light Tower

Location: Linden Utah
S/N: 5AJLS1613CB004047
Engine: Kubota 3 Cyl Diesel
4000 Watt, 60 Hz, 6 KW, 120/240 Volt, 50/25 Amp, 4 1000 Watt Lights, 30ft.
Mast, 3 Stabilizers, Ball Hitch, ST175/80D13 Tires
*This item is located at 1261 West 300 South, Lindon, Utah. To preview this item call 888-230-8840 to schedule an appointment. All questions regarding this machine and/or the purchase of this machine are to be directed to JSA at the number above.*** Title Delay**
Hours: 6,227

143 2012 Genie S85 4x4 Boom Lift

Location: Salt Lake City Utah
S/N: S8512-9195
Engine: Deutz 74hp Diesel Transmission: Hydrostatic
85ft. Height, 76ft. Reach, 500lb. Platform Capacity, 45% Grade Ability
This item is located at 2051 N. Redwood Rd., Salt Lake City, Utah. To preview this item call 888-230-8840 to schedule an appointment. All questions regarding this machine and/or the purchase of this machine are to be directed to JSA at the number above.
Hours: 3,874

144 2013 Genie S65 4x4 Boom Lift

Location: Ogden Utah
S/N: S6013-26250
Engine: Deutz 48hp Diesel Transmission: Hydrostatic
65ft. Height, 56ft. Reach, 500lb. Basket Capacity, 45% Grade Ability
This item is located at 1850 W. 1350 S. Ogden, Utah. To preview this item call 888-230-8840 to schedule an appointment. All questions regarding this machine and/or the purchase of this machine are to be directed to JSA at the number above.
Hours: 4,611

145 2012 Genie S40 4x4 Boom Lift

Location: Lindon Utah
S/N: S4012-16678
Engine: Deutz Diesel Transmission: Hydrostatic
40ft. Height, 31ft. Reach, 500 lb. Platform Capacity, Self Leveling Platform, 40% Grade Ability
*This item is located at 1261 West 300 South, Lindon, Utah. To preview this item

LOT # DESCRIPTION

call 888-230-8840 to schedule an appointment. All questions regarding this machine and/or the purchase of this machine are to be directed to JSA at the number above.*
Hours: 3,825

145a 2011 Genie Z45/25 4x4 Articulated Boom Lift

Location: Grand Junction Colorado

S/N: Z452511A-40913

Engine: Deutz 4L3 Diesel Transmission: Hydrostatic

45ft. Height, 25ft. Reach, 500lb. Basket Capacity, 45% Grade Ability

This item is located at 2320 Interstate Ave., Grand Junction, Colorado. To preview this item call 888-230-8840 to schedule an appointment. All questions regarding this machine and/or the purchase of this machine are to be directed to JSA at the number above.

Hours: 2,906

146 2008 Genie Z45/25 4x4 Articulating Boom Lift

Location: Lindon Utah

S/N: Z452508A37878

Engine: 4cyl Gas/Lp Transmission: Hydrostatic

45ft. Height, 25ft. Reach, 500lb. Basket Capacity, 45% Grade Ability

This item is located at 1261 West 300 South, Lindon, Utah. To preview this item call 888-230-8840 to schedule an appointment. All questions regarding this machine and/or the purchase of this machine are to be directed to JSA at the number above.

Hours: 2,989

147 2012 Genie GS-2669RT 4x4 RoughTerrain Scissor Lift

Location: Commerce City Colorado

S/N: GS6912-691

Engine: Kubota W972-GL-ET Gas/Lp

26ft. Height, 69in. Platform Width, 1500lb. Platform Capacity, 5ft. Deck Extension, 40% Grade Ability

This item is located at 5420 Dahlia St., Commerce City, Colorado. To preview this item call 888-230-8840 to schedule an appointment. All questions regarding this machine and/or the purchase of this machine are to be directed to JSA at the number above.

Hours: 2,351

148 2012 Genie GS-2669RT 4x4 RoughTerrain Scissor Lift

Location: Lindon Utah

S/N: GS6912-709

Engine: Kubota W972-GL-ET Gas/Lp

26ft. Height, 69in. Platform Width, 1500lb. Platform Capacity, 5ft. Deck Extension, 40% Grade Ability

*This item is located at 1261 West 300 South, Lindon, Utah. To preview this item

LOT # DESCRIPTION

call 888-230-8840 to schedule an appointment. All questions regarding this machine and/or the purchase of this machine are to be directed to JSA at the number above.*
Hours: 1,895

149 2012 Genie GS3246 Scissor Lift

Location: Colorado Springs Colorado

S/N: GS4612A-98891

Engine: Electric

32ft. Height, 46in. Platform Width, 700lb. Platform Capacity, 39in. Deck Extension, Zero Inside Turn Radius, AC Power Inverter, Non-Marking Tires

This item is located at 11211 E. Cheyenne Rd., Colorado Springs, Colorado. To preview this item call 888-230-8840 to schedule an appointment. All questions regarding this machine and/or the purchase of this machine are to be directed to JSA at the number above.

Hours: 379

150 2012 Genie GS3246 Scissor Lift

Location: Colorado Springs Colorado

S/N: GS4612A-110594

Engine: Electric

32ft. Height, 46in. Platform Width, 700lb. Platform Capacity, 39in. Deck Extension, Zero Inside Turn Radius, AC Power Inverter, Non-Marking Tires

This item is located at 11211 E. Cheyenne Rd., Colorado Springs, Colorado. To preview this item call 888-230-8840 to schedule an appointment. All questions regarding this machine and/or the purchase of this machine are to be directed to JSA at the number above.

Hours: 371

151 2012 Skyjack 4632 Scissor Lift

Location: Ogden Utah

S/N: 70011767

Engine: Electric

32ft. Height, 46in. Platform Width, 700lb. Platform Capacity, 4ft. Deck Extension, AC Power Inverter, Non-Marking Tires

This item is located at 1850 W. 1350 S. Ogden, Utah. To preview this item call 888-230-8840 to schedule an appointment. All questions regarding this machine and/or the purchase of this machine are to be directed to JSA at the number above.

Hours: 224

152 2013 Genie GS3232 Scissor Lift

Location: Fort Collins Colorado

S/N: GS3213A-113224

Engine: Electric

32ft. Height, 32in. Platform Width, 500lb. Platform Capacity, 3ft. Deck Extension, AC Power Inverter, Zero Inside Turn Radius, Non-Marking Tires

LOT # DESCRIPTION

This item is located at 4228 E. Mulberry St., Fort Collins, Colorado. To preview this item call 888-230-8840 to schedule an appointment. All questions regarding this machine and/or the purchase of this machine are to be directed to JSA at the number above.

Hours: 321

153 2012 Genie GS3232 Scissor Lift

Location: Ogden Utah

S/N: GS3212A-111491

Engine: Electric

32ft. Height, 32in. Platform Width, 500lb. Platform Capacity, 3ft. Deck Extension, AC Power Inverter, Zero Inside Turn Radius, Non-Marking Tires

This item is located at 1850 W. 1350 S. Ogden, Utah. To preview this item call 888-230-8840 to schedule an appointment. All questions regarding this machine and/or the purchase of this machine are to be directed to JSA at the number above.

Hours: 150

154 2012 Genie GS2646 Scissor Lift

Location: Lindon Utah

S/N: GS4612A-110446

Engine: Electric

26ft. Height, 46in. Platform Width, 1,000lb. Platform Capacity, Deck Extension, AC Power Inverter, Zero Inside Turn Radius, Non-Marking Tires

This item is located at 1261 West 300 South, Lindon, Utah. To preview this item call 888-230-8840 to schedule an appointment. All questions regarding this machine and/or the purchase of this machine are to be directed to JSA at the number above.

Hours: 363

155 2013 Genie GS2632 Scissor Lift

Location: Ogden Utah

S/N: GS3213A-114029

Engine: Electric

26ft. Height, 32in. Platform Width, 500lb. Platform Capacity, 3ft. Deck Extension, AC Power Inverter, Non-Marking Tires

This item is located at 1850 W. 1350 S. Ogden, Utah. To preview this item call 888-230-8840 to schedule an appointment. All questions regarding this machine and/or the purchase of this machine are to be directed to JSA at the number above.

Hours: 275

156 2013 Genie GS2632 Scissor Lift

Location: Ogden Utah

S/N: GS3213A-114027

Engine: Electric

26ft. Height, 32in. Platform Width, 500lb. Platform Capacity, 3ft. Deck Extension, AC Power Inverter, Non-Marking Tires

LOT # DESCRIPTION

This item is located at 1850 W. 1350 S. Ogden, Utah. To preview this item call 888-230-8840 to schedule an appointment. All questions regarding this machine and/or the purchase of this machine are to be directed to JSA at the number above.
Hours: 304

157 2013 Genie GS1930 Scissor Lift

Location: Commerce City Colorado

S/N: GS3013A-119451

Engine: Electric

19ft. Height, 30in. Platform Width, 500lb. Platform Capacity, 36in. Platform Extension, AC Power Inverter, Zero Inside Turning Radius, Non-Marking Tires

This item is located at 5420 Dahlia St., Commerce City, Colorado. To preview this item call 888-230-8840 to schedule an appointment. All questions regarding this machine and/or the purchase of this machine are to be directed to JSA at the number above.

Hours: 303

157a 2013 Genie GS1930 Scissor Lift

Location: Commerce City Colorado

S/N: GS3013A-119425

Engine: Electric

19ft. Height, 30in. Platform Width, 500lb. Platform Capacity, 36in. Platform Extension, AC Power Inverter, Zero Inside Turning Radius, Non-Marking Tires

This item is located at 5420 Dahlia St., Commerce City, Colorado. To preview this item call 888-230-8840 to schedule an appointment. All questions regarding this machine and/or the purchase of this machine are to be directed to JSA at the number above.

Hours: 274

158 2013 Genie GS1930 Scissor Lift

Location: Lindon Utah

S/N: GS3013A-119450

Engine: Electric

19ft. Height, 30in. Platform Width, 500lb. Platform Capacity, 36in. Platform Extension, AC Power Inverter, Zero Inside Turning Radius, Non-Marking Tires

This item is located at 1261 West 300 South, Lindon, Utah. To preview this item call 888-230-8840 to schedule an appointment. All questions regarding this machine and/or the purchase of this machine are to be directed to JSA at the number above.

Hours: 299

158a 2012 Genie GS1930 Scissor Lift

Location: Commerce City Colorado

S/N: GS3012A-117355

Engine: Electric

19ft. Height, 30in. Platform Width, 500lb. Platform Capacity, 36in. Platform

LOT # DESCRIPTION

Extension, AC Power Inverter, Zero Inside Turning Radius, Non-Marking Tires
 This item is located at 5420 Dahlia St., Commerce City, Colorado. To preview this item call 888-230-8840 to schedule an appointment. All questions regarding this machine and/or the purchase of this machine are to be directed to JSA at the number above.
 Hours: 334

159 2013 Genie GS1930 Scissor Lift

Location: Ogden Utah
 S/N: GS3013A-121461
 Engine: Electric
 19ft. Height, 30in. Platform Width, 500lb. Platform Capacity, 36in. Platform
 Extension, AC Power Inverter, Zero Inside Turning Radius, Non-Marking Tires
 This item is located at 1850 W. 1350 S. Ogden, Utah. To preview this item call 888-230-8840 to schedule an appointment. All questions regarding this machine and/or the purchase of this machine are to be directed to JSA at the number above.
 Hours: 796

159a 2013 Genie GS1930 Scissor Lift

Location: Commerce City Colorado
 S/N: GS3013A-121539
 Engine: Electric
 19ft. Height, 30in. Platform Width, 500lb. Platform Capacity, 36in. Platform
 Extension, AC Power Inverter, Zero Inside Turning Radius, Non-Marking Tires
 This item is located at 5420 Dahlia St., Commerce City, Colorado. To preview this item call 888-230-8840 to schedule an appointment. All questions regarding this machine and/or the purchase of this machine are to be directed to JSA at the number above.
 Hours: 203

160 2012 Genie GS1930 Scissor Lift

Location: Ogden Utah
 S/N: GS3012A-112985
 Engine: Electric
 19ft. Height, 30in. Platform Width, 500lb. Platform Capacity, 36in. Platform
 Extension, AC Power Inverter, Zero Inside Turning Radius, Non-Marking Tires

 This item is located at 1850 W. 1350 S. Ogden, Utah. To preview this item call 888-230-8840 to schedule an appointment. All questions regarding this machine and/or the purchase of this machine are to be directed to JSA at the number above.
 Hours: 160

160a 2012 Genie GS1930 Scissor Lift

Location: Commerce City Colorado
 S/N: GS3012A-113262

LOT # DESCRIPTION

Engine: Electric

19ft. Height, 30in. Platform Width, 500lb. Platform Capacity, 36in. Platform Extension, AC Power Inverter, Zero Inside Turning Radius, Non-Marking Tires
This item is located at 5420 Dahlia St., Commerce City, Colorado. To preview this item call 888-230-8840 to schedule an appointment. All questions regarding this machine and/or the purchase of this machine are to be directed to JSA at the number above.

Hours: 92

161 2012 Genie GS1930 Scissor Lift

Location: Ogden Utah

S/N: GS3012A-113266

Engine: Electric

19ft. Height, 30in. Platform Width, 500lb. Platform Capacity, 36in. Platform Extension, AC Power Inverter, Zero Inside Turning Radius, Non-Marking Tires
This item is located at 1850 W. 1350 S. Ogden, Utah. To preview this item call 888-230-8840 to schedule an appointment. All questions regarding this machine and/or the purchase of this machine are to be directed to JSA at the number above.

Hours: 332

162 2012 Genie GS1930 Scissor Lift

Location: Lindon Utah

S/N: GS3012A-113613

Engine: Electric

19ft. Height, 30in. Platform Width, 500lb. Platform Capacity, 36in. Platform Extension, AC Power Inverter, Zero Inside Turning Radius, Non-Marking Tires
This item is located at 1261 West 300 South, Lindon, Utah. To preview this item call 888-230-8840 to schedule an appointment. All questions regarding this machine and/or the purchase of this machine are to be directed to JSA at the number above.

Hours: 345

163 2012 Genie GS1930 Scissor Lift

Location: Ogden Utah

S/N: GS3012A-113594

Engine: Electric

19ft. Height, 30in. Platform Width, 500lb. Platform Capacity, 36in. Platform Extension, AC Power Inverter, Zero Inside Turning Radius, Non-Marking Tires
This item is located at 1850 W. 1350 S. Ogden, Utah. To preview this item call 888-230-8840 to schedule an appointment. All questions regarding this machine and/or the purchase of this machine are to be directed to JSA at the number above.

Hours: 576

164 2012 Genie GS1930 Scissor Lift

Location: Salt Lake City Utah

S/N: GS3012A-117354

LOT # DESCRIPTION

Engine: Electric

19ft. Height, 30in. Platform Width, 500lb. Platform Capacity, 36in. Platform

Extension, AC Power Inverter, Zero Inside Turning Radius, Non-Marking Tires

This item is located at 2051 N. Redwood Rd., Salt Lake City, Utah. To preview this item call 888-230-8840 to schedule an appointment. All questions regarding this machine and/or the purchase of this machine are to be directed to JSA at the number above.

Hours: 431

165 2013 Genie GS1930 Scissor Lift

Location: Englewood Colorado

S/N: GS3013A-119418

Engine: Electric

19ft. Height, 30in. Platform Width, 500lb. Platform Capacity, 36in. Platform

Extension, AC Power Inverter, Zero Inside Turning Radius, Non-Marking Tires

This item is located at 12550 E. Broncos Pkwy., Englewood, Colorado. To preview this item call 888-230-8840 to schedule an appointment. All questions regarding this machine and/or the purchase of this machine are to be directed to JSA at the number above.

Hours: 273

166 2013 Genie GR-20 Man Lift

Location: Ogden Utah

S/N: GR13-25708

Engine: Electric

20ft. Height, 350lb. Platform Capacity, 30% Grade Ability, Zero Inside Turn

Radius, Rotating Jib, 31in. Platform Width, Self Propelled, Non-Marking Tires

This item is located at 1850 W. 1350 S. Ogden, Utah. To preview this item call 888-230-8840 to schedule an appointment. All questions regarding this machine and/or the purchase of this machine are to be directed to JSA at the number above.

Hours: 280

167 2013 Genie GR-20 Man Lift

Location: Lindon Utah

S/N: GR13-25559

Engine: Electric

20ft. Height, 350lb. Platform Capacity, 30% Grade Ability, Zero Inside Turn

Radius, Rotating Jib, 31in. Platform Width, Self Propelled, Non-Marking Tires

This item is located at 1261 West 300 South, Lindon, Utah. To preview this item call 888-230-8840 to schedule an appointment. All questions regarding this machine and/or the purchase of this machine are to be directed to JSA at the number above.

Hours: 380

LOT # DESCRIPTION

168 2013 Genie GR-20 Man Lift

Location: Colorado Springs Colorado

S/N: GR13-26070

Engine: Electric

20ft. Height, 350lb. Platform Capacity, 30% Grade Ability, Zero Inside Turn Radius, Rotating Jib, 31in. Platform Width, Self Propelled, Non-Marking Tires

This item is located at 11211 E. Cheyenne Rd., Colorado Springs, Colorado. To preview this item call 888-230-8840 to schedule an appointment. All questions regarding this machine and/or the purchase of this machine are to be directed to JSA at the number above.

Hours: 264

169 2013 Genie GR-20 Man Lift

Location: Salt Lake City Utah

S/N: GR13-26430

Engine: Electric

20ft. Height, 350lb. Platform Capacity, 30% Grade Ability, Zero Inside Turn Radius, Rotating Jib, 31in. Platform Width, Self Propelled, Non-Marking Tires

This item is located at 2051 N. Redwood Rd., Salt Lake City, Utah. To preview this item call 888-230-8840 to schedule an appointment. All questions regarding this machine and/or the purchase of this machine are to be directed to JSA at the number above.

Hours: 200

170 2012 Genie GR-20 Man Lift

Location: Fort Collins Colorado

S/N: GR12-21113

Engine: Electric

20ft. Height, 350lb. Platform Capacity, 30% Grade Ability, Zero Inside Turn Radius, Rotating Jib, 31in. Platform Width, Self Propelled, Non-Marking Tires

This item is located at 4228 E. Mulberry St., Fort Collins, Colorado. To preview this item call 888-230-8840 to schedule an appointment. All questions regarding this machine and/or the purchase of this machine are to be directed to JSA at the number above.

Hours: 398

171 2012 Genie GR-20 Man Lift

Location: Lindon Utah

S/N: GR12-21108

Engine: Electric

20ft. Height, 350lb. Platform Capacity, 30% Grade Ability, Zero Inside Turn Radius, Rotating Jib, 31in. Platform Width, Self Propelled, Non-Marking Tires

*This item is located at 1261 West 300 South, Lindon, Utah. To preview this item call 888-230-8840 to schedule an appointment. All questions regarding this machine

LOT # DESCRIPTION

and/or the purchase of this machine are to be directed to JSA at the number above.*

Hours: 373

172 2012 Genie GR-20 Man Lift

Location: Ogden Utah

S/N: GR12-22106

Engine: Electric

20ft. Height, 350lb. Platform Capacity, 30% Grade Ability, Zero Inside Turn

Radius, Rotating Jib, 31in. Platform Width, Self Propelled, Non-Marking Tires

*This item is located at 1850 W. 1350 S. Ogden, Utah. To preview this item call

888-230-8840 to schedule an appointment. All questions regarding this machine

and/or the purchase of this machine are to be directed to JSA at the number above.*

Hours: 702

173 2011 Genie GR-20 Man Lift

Location: Ogden Utah

S/N: GR11-18406

Engine: Electric

20ft. Height, 350lb. Platform Capacity, 30% Grade Ability, Zero Inside Turn

Radius, Rotating Jib, 31in. Platform Width, Self Propelled, Non-Marking Tires

*This item is located at 1850 W. 1350 S. Ogden, Utah. To preview this item call

888-230-8840 to schedule an appointment. All questions regarding this machine

and/or the purchase of this machine are to be directed to JSA at the number above.*

Hours: 376

174 Caterpillar D7 Crawler Dozer

Location: Spokane Washington

Engine: Caterpillar 6 Cyl Diesel Transmission: Manual

Push Blade, OROPS, Hyster Winch w/no Cable, Single Bar Tracks, *Includes: Root

Rake w/Push Arms

174a 1998 Dresser TD-8H Crawler Dozer

Location: Washougal Washington

S/N: 4710002P036233

Engine: 4cyl Diesel

93in. 6-Way Blade, Sweeps, OROPS, Multi Shank Ripper w/3 Shanks, 17in. Single

Bar Tracks

Hours: 4,605

175 2012 Hamm 3410 Vibratory Roller

Location: Washougal Washington

S/N: H1791799

Engine: Deutz 4.03L 134hp Diesel Transmission: Hydrostatic

84in. Smooth Drum, Open Canopy, 23.1-26 Tires

LOT # DESCRIPTION

Hours: 1,708

176 Dynapac CA134 Vibratory Roller

Location: Washougal Washington

S/N: 8127US5141

Engine: John Deere 2781F 3.0L Diesel Transmission: Hydrostatic

54in. Smooth Drum, Open Canopy, 12.5-20 Tires, Comes With 54in. Padfoot Shell Kit

Hours: 1,139

177 Ingersoll Rand SD-105DX Vibratory Roller

Location: Washougal Washington

S/N: 194775

Engine: Cummins 4.5L 4cyl Diesel Transmission: Hydrostatic

84in. Drum, OROPS, Canopy, 23.1-26 Tires

Hours: 498 indicated

178 Caterpillar 815 Landfill Compactor

Location: Washougal Washington

S/N: 91P1617

Engine: Caterpillar 3306 6cyl Diesel Transmission: Hydrostatic

44in. Pad Foot Drums, 138in. Push Blade, EROPS, Cab, Heat, Uniden CB Radio

Hours: 10,195

179 2014 Bomag BMP 8500 Trench Compactor

Location: Commerce City Colorado

S/N: 101720122491

Engine: Kubota D1005 1.0L Diesel

24in. Padfoot Drums, Walk Behind, Corded Remote Control

This item is located at 5420 Dahlia St., Commerce City, Colorado. To preview this item call 888-230-8840 to schedule an appointment. All questions regarding this machine and/or the purchase of this machine are to be directed to JSA at the number above.

Hours: 844

180 2014 Bomag BMP 8500 Trench Compactor

Location: Colorado Springs Colorado

S/N: 101720122708

Engine: Kubota D1005 1.0L Diesel

24in. Padfoot Drums, Walk Behind, Corded Remote Control

This item is located at 11211 E. Cheyenne Rd., Colorado Springs, Colorado. To preview this item call 888-230-8840 to schedule an appointment. All questions regarding this machine and/or the purchase of this machine are to be directed to JSA at the number above.

LOT #	DESCRIPTION
-------	-------------

Hours: 888

181 2018 John Deere 135G Hydraulic Excavator

Location: Washougal Washington

S/N: 1FF135GXHJF500885

Engine: Isuzu 4cyl 101hp Diesel Transmission: Hydrostatic

CWS 58in. Muck Bucket, PSM II Thumb, Dromone Hydraulic Quick Connect, Auxiliary Hydraulics, 11ft. 6in. Stick, 98in. Push Blade, EROPS, Cab, Heat, Rear View Camera, AM/FM, Uniden 2-Way Radio, 20in. Rubber Pad Tracks

Hours: 874

182 CWS 34in. Dig Bucket

Location: Washougal Washington

183 PSM II 22in. Dig Bucket w/Cutting Edge

Location: Washougal Washington

184 2012 John Deere 225D LC Hydraulic Excavator

Location: Washougal Washington

S/N: 1FF225DXPBD502053

Engine: Isuzu 4cyl Diesel Transmission: Hydrostatic

CWS 22in. Dig Bucket w/Cutting Edge, TAG Thumb, Dromone Hydraulic Q/C, Auxiliary Hydraulics, 11ft. 6in. Stick, EROPS, Cab, A/C, Heat, AM/FM, 32in.

Triple Bar Tracks, *Hours Reported accurate as of 4/3/20 (hours on meter inaccurate) - see mechanic's invoice report in photos*

Hours: 4,768

185 2010 John Deere 350D LC Hydraulic Excavator

Location: Washougal Washington

S/N: FF350DX806752

Engine: John Deere 6cyl Diesel Transmission: Hydrostatic

Daewo XD 48in. Dig Bucket w/Cutting Edge, TAG Thumb, Dromone Hydraulic Q/C, Auxiliary Hydraulics, 12ft. Stick, EROPS, Cab, Air Seat, Heated Seat, Heat, A/C, AM/FM, 32in. Triple Bar Tracks

Hours: 9,278

186 Caterpillar 320C U Hydraulic Excavator

Location: Spokane Washington

S/N: CAT0320CHFBB00797

Engine: Caterpillar Diesel Transmission: Hydrostatic

36in CAT Dig Bucket, EROPS, Cab, AM/FM, A/C, Digital Display, Triple Bar Tracks

Hours: 10,063

LOT #	DESCRIPTION
187	TAG 72in. Muck Bucket Location: Washougal Washington To Fit Deere 200D
188	TAG 72in. Muck Bucket Location: Washougal Washington To Fit Deere 200D
189	CP 60in. Muck Bucket Location: Washougal Washington
190	TAG 48in. Dig Bucket w/Cutting Edge Location: Washougal Washington To Fit Kobelco SK200SR
191	TAG 36in. Dig Bucket Location: Washougal Washington To Fit Deere 200D
192	Caterpillar 42in. Dig Bucket Location: Washougal Washington To Fit Caterpillar 336, DB Linkage
193	Caterpillar 30in. Dig Bucket Location: Washougal Washington w/Cutting Edge, To Fit Caterpillar 328
194	BMP 30in. Dig Bucket Location: Washougal Washington To Fit Caterpillar 336, DB Linkage
202	2011 John Deere 2154D Processor Location: Spokane Washington Engine: John Deere Diesel Transmission: Hydrostatic 2011 Waratah HTH622B Processing Head, EROPS, Forestry Cab, Cylinder Guards, Forestry Chassis, 27in Double Bar Tracks Hours: 13,081
203	2006 Caterpillar 320C FM ST Processor Location: Spokane Washington S/N: CAT0320CVTBR01024 Engine: Caterpillar 6cyl Diesel Transmission: Hydrostatic Logmax 7000 Processing Head, Auxiliary Hydraulics, EROPS, Forestry Cab, Cab Riser, Rock Guards, Logmax 402 Monitoring System, Digital Display, A/C, AM/FM, 2-Way Radio, 27in Double Bar Tracks

LOT # DESCRIPTION

204 2008 John Deere 160D LC Hydraulic Excavator

Location: Washougal Washington

S/N: FF160DX050039

Engine: John Deere 4cyl Diesel Transmission: Hydrostatic

Fecon Mulching Head, 36in. Cutting Width, 12ft. 6in. Stick, EROPS, Cab Guard,

Heated Seat, A/C, Heat, AM/FM, 2 Way Radio, 28in. Triple Bar Tracks

Hours: 5,853

205 CMI C450 Crawler Mulcher

Location: Washougal Washington

S/N: GBJ04707

Engine: John Deere 6cyl Diesel Transmission: Hydrostatic

Fecon BH300HXD2-FS-CN00683-58 Mulcher, 88in. Cutting Width, EROPS, Cab,

Cab Guard, A/C, Heat, Rear View Camera, 30in. Single Bar Tracks

Hours: 4,322

206 2006 John Deere 844J Log Loader

Location: Washougal Washington

S/N: DW844JX604078

Engine: John Deere 6125H 330hp Diesel Transmission: Power Shift

CWS Grapple, EROPS, Heat, Motorola 2-Way Radio, Uniden CB Radio, 29.5R25

Tires

Hours: 13,122

207 2005 Caterpillar 525B Skidder

Location: Washougal Washington

S/N: CAT0525BA3KZ01942

Engine: Caterpillar 3126 Diesel

8ft. 9in. Push Blade w/Brush Rake, Sweeps, EROPS, Cab, A/C, Heat,

AM/FM/Cassette, Caterpillar Grapple, 30.5L-32 Tires

Hours: 16,266

208 2001 Kenworth T800B T/A Self Loading Log Truck

Location: Washougal Washington

VIN: 1R878230

Engine: Caterpillar C15 Turbo Diesel Transmission: Eaton Fuller RTL018918B 18
Speed

2001 Olympic Log Loader s/n 6571425M, Log Bunk, 2 Outriggers, Merritt

Headache Rack, Beam Suspension, Arm w/Pintle Hitch and Air Hookups, Air

Driver Seat, SI Lodec Scale, CB Radio, A/C, AM/FM/Cassette, Dual Diff Locks,

Engine Brake, Cruise Control, Power Windows, Chelsae PTO, 4.3 Ratio, 11R24.5

Tires, *To Be Sold As a Set with Whitlog Log Trailer ** Title Delay**

Miles: 48,342 indicated

LOT # DESCRIPTION

208a 2001 Whit-log SE100 T/A Log Trailer

Location: Washougal Washington

VIN: 1W90111041SW01051

Log Bunk, Pintle Hitch, Air Brakes, Spring Suspension, 11R24.5 Tires, *To Be Sold As A Set With The 2001 Kenworth T800B Self Loading Log Truck*** Title Delay**

209 1991 Grove AT-422 4x4 Truck Crane

Location: Washougal Washington

S/N: 476AT0422MS075491

Engine: Cummins 6cyl Diesel Transmission: Automatic

44,000lb. Capacity, 70ft. 2-Stage Boom, 26ft. 8in. Jib, Johnson Block, Crane s/n 75491, 4 Outriggers, PAT Winch, PAT DS350DW Scale, Heated Mirrors, 22,000lb Front, 22,000lb. Rear, 445/80R25 Tires, 1095 miles indicated** Title Delay**

Hours: 8,586

210 1997 Grove RT528C Rough Terrain Crane

Location: Washougal Washington

S/N: 86246

Engine: Cummins 6BT 5.9L Diesel Transmission: Automatic

28 Ton, 3-Section 28 - 70 ft. Boom, 2 Grove H015D-16G Main Hoist with Drum Rotation Indicator and Cable Follower, 5-Ton Non-Swivel Headache Ball, Control Valve for Future Auciliary Hoist, Engine Block heater, PAT "LMI" System with A2B and Control Lockouts, PAT Light Bar, Propane Heater and Defroster, Single Axis Controllers, Pintle Hitch, 4 Stabilizers, Air Dryer, 20.5x25-24PR Hi-Flotation tires

Hours: 1,538

211 2012 Genie S85 4x4 Boom Lift

Location: Ogden Utah

S/N: S8512-9604

Engine: Deutz 74hp Diesel

85ft. Height, 76ft. Reach, 500lb. Platform Capacity, 45% Grade Ability

This item is located at 1850 W. 1350 S. Ogden, Utah. To preview this item call 888-230-8840 to schedule an appointment. All questions regarding this machine and/or the purchase of this machine are to be directed to JSA at the number above.

Hours: 4,047

211a 2012 Genie S-65 4x4 Boom Lift

Location: Grand Junction Colorado

S/N: S6012-23304

Engine: Deutz F3L Diesel Transmission: Hydrostatic

65ft. Height, 56ft. Reach, 500lb. Basket Capacity, 45% Grade Ability

*This item is located at 2320 Interstate Ave., Grand Junction, Colorado. To preview this item call 888-230-8840 to schedule an appointment. All questions regarding this

LOT #	DESCRIPTION
-------	-------------

machine and/or the purchase of this machine are to be directed to JSA at the number above.*

Hours: 4,105

211b 2012 Genie S-65 4x4 Boom Lift

Location: Grand Junction Colorado

S/N: S6012-23317

Engine: Deutz F3L Diesel Transmission: Hydrostatic

65ft. Height, 56ft. Reach, 500lb. Basket Capacity, 45% Grade Ability

This item is located at 2320 Interstate Ave., Grand Junction, Colorado. To preview this item call 888-230-8840 to schedule an appointment. All questions regarding this machine and/or the purchase of this machine are to be directed to JSA at the number above.

Hours: 4,184

211c 2011 JLG 600S Boom Lift

Location: Grand Junction Colorado

S/N: 2300151321

Engine: Deutz Diesel Transmission: Hydrostatic

60ft. Height, 49ft. Reach, 500lb. Basket Capacity, 45% Grade Ability

This item is located at 2320 Interstate Ave., Grand Junction, Colorado. To preview this item call 888-230-8840 to schedule an appointment. All questions regarding this machine and/or the purchase of this machine are to be directed to JSA at the number above.

Hours: 4,559

212 1996 JLG 60H Boom Lift

Location: Spokane Washington

S/N: 0289510300024754

Engine: Ford 4 Cyl LP/Gas Transmission: Hydrostatic

60ft Max Height, 50ft Max Reach, 1000lb Capacity

Hours: 8,407

213 2011 Skyjack SJ8243 4x4 Scissor Lift

Location: Grand Junction Colorado

S/N: 34002051

Engine: 65hp Gas/Lp

43ft. Height, 82in. Platform Width, 1000lb. Platform Capacity, 55in. Deck Extension,

This item is located at 2320 Interstate Ave., Grand Junction, Colorado. To preview this item call 888-230-8840 to schedule an appointment. All questions regarding this machine and/or the purchase of this machine are to be directed to JSA at the number above.

Hours: 1,821

LOT # DESCRIPTION

214 2012 Genie GS-2669RT 4x4 RoughTerrain Scissor Lift

Location: Ogden Utah

S/N: GS6912-980

Engine: Kubota W972-GL-ET Gas/Lp

26ft. Height, 69in. Platform Width, 1500lb. Platform Capacity, 5ft. Deck Extension, 40% Grade Ability

This item is located at 1850 W. 1350 S. Ogden, Utah. To preview this item call 888-230-8840 to schedule an appointment. All questions regarding this machine and/or the purchase of this machine are to be directed to JSA at the number above.

Hours: 1,366

214a 2012 Genie GS-2669RT 4x4 RoughTerrain Scissor Lift

Location: Commerce City Colorado

S/N: GS6912-726

Engine: Kubota W972-GL-ET Gas/Lp

26ft. Height, 69in. Platform Width, 1500lb. Platform Capacity, 5ft. Deck Extension, 40% Grade Ability

This item is located at 5420 Dahlia St., Commerce City, Colorado. To preview this item call 888-230-8840 to schedule an appointment. All questions regarding this machine and/or the purchase of this machine are to be directed to JSA at the number above.

Hours: 1,964

215 2012 Skyjack SJIII 4632 Scissor Lift

Location: Ogden Utah

S/N: 70011100

Engine: Electric

32ft. Height, 46in. Platform Width, 700lb. Platform Capacity, 4ft. Deck Extension, AC Power Inverter, Non-Marking Tires

This item is located at 1850 W. 1350 S. Ogden, Utah. To preview this item call 888-230-8840 to schedule an appointment. All questions regarding this machine and/or the purchase of this machine are to be directed to JSA at the number above.

Hours: 299

216 2012 Skyjack SJIII 4632 Scissor Lift

Location: Lindon Utah

S/N: 70011099

Engine: Electric

32ft. Height, 46in. Platform Width, 700lb. Platform Capacity, 4ft. Deck Extension, AC Power Inverter, Non-Marking Tires

This item is located at 1261 West 300 South, Lindon, Utah. To preview this item call 888-230-8840 to schedule an appointment. All questions regarding this machine and/or the purchase of this machine are to be directed to JSA at the number above.

Hours: 228

LOT # DESCRIPTION

217 2013 Genie GS3232 Scissor Lift

Location: Commerce City Colorado

S/N: GS3213A-114744

Engine: Electric

32ft. Height, 32in. Platform Width, 500lb. Platform Capacity, 3ft. Deck Extension, AC Power Inverter, Zero Inside Turn Radius, Non-Marking Tires

This item is located at 5420 Dahlia St., Commerce City, Colorado. To preview this item call 888-230-8840 to schedule an appointment. All questions regarding this machine and/or the purchase of this machine are to be directed to JSA at the number above.

Hours: 4

218 2012 Genie GS2646 Scissor Lift

Location: Ogden Utah

S/N: GS4612A-110819

Engine: Electric

26ft. Height, 46in. Platform Width, 1,000lb. Platform Capacity, Deck Extension, AC Power Inverter, Zero Inside Turn Radius, Non-Marking Tires

This item is located at 1850 W. 1350 S. Ogden, Utah. To preview this item call 888-230-8840 to schedule an appointment. All questions regarding this machine and/or the purchase of this machine are to be directed to JSA at the number above.

Hours: 97

219 2012 Genie GS2632 Scissor Lift

Location: Ogden Utah

S/N: GS3212A-110073

Engine: Electric

26ft. Height, 32in. Platform Width, 500lb. Platform Capacity, 3ft. Deck Extension, AC Power Inverter, Non-Marking Tires

This item is located at 1850 W. 1350 S. Ogden, Utah. To preview this item call 888-230-8840 to schedule an appointment. All questions regarding this machine and/or the purchase of this machine are to be directed to JSA at the number above.

Hours: 285

220 2012 Genie GS2632 Scissor Lift

Location: Salt Lake City Utah

S/N: GS3212A-98856

Engine: Electric

26ft. Height, 32in. Platform Width, 500lb. Platform Capacity, 3ft. Deck Extension, AC Power Inverter, Non-Marking Tires

This item is located at 2051 N. Redwood Rd., Salt Lake City, Utah. To preview this item call 888-230-8840 to schedule an appointment. All questions regarding this machine and/or the purchase of this machine are to be directed to JSA at the number above.

LOT #	DESCRIPTION
-------	-------------

Hours: 400

221 2012 Genie GS1930 Scissor Lift

Location: Ogden Utah

S/N: GS3012A-117192

Engine: Electric

19ft. Height, 30in. Platform Width, 500lb. Platform Capacity, 36in. Platform Extension, AC Power Inverter, Zero Inside Turning Radius, Non-Marking Tires

This item is located at 1850 W. 1350 S. Ogden, Utah. To preview this item call 888-230-8840 to schedule an appointment. All questions regarding this machine and/or the purchase of this machine are to be directed to JSA at the number above.

Hours: 419

221a 2013 Genie GS1930 Scissor Lift

Location: Commerce City Colorado

S/N: GS3013A-121468

Engine: Electric

19ft. Height, 30in. Platform Width, 500lb. Platform Capacity, 36in. Platform Extension, AC Power Inverter, Zero Inside Turning Radius, Non-Marking Tires

This item is located at 5420 Dahlia St., Commerce City, Colorado. To preview this item call 888-230-8840 to schedule an appointment. All questions regarding this machine and/or the purchase of this machine are to be directed to JSA at the number above.

Hours: 274

222 2012 Genie GS-1930 Scissor Lift

Location: Englewood Colorado

S/N: GS3012A-113249

19ft. Height, 30in. Platform Width, 500lb. Platform Capacity, 36in. Platform Extension, AC Power Inverter, Zero Inside Turning Radius, Non-Marking Tires

This item is located at 12550 E. Broncos Pkwy., Englewood, Colorado. To preview this item call 888-230-8840 to schedule an appointment. All questions regarding this machine and/or the purchase of this machine are to be directed to JSA at the number above.

222a 2013 Genie GS1930 Scissor Lift

Location: Commerce City Colorado

S/N: GS3013A-121370

Engine: Electric

19ft. Height, 30in. Platform Width, 500lb. Platform Capacity, 36in. Platform Extension, AC Power Inverter, Zero Inside Turning Radius, Non-Marking Tires

This item is located at 5420 Dahlia St., Commerce City, Colorado. To preview this item call 888-230-8840 to schedule an appointment. All questions regarding this machine and/or the purchase of this machine are to be directed to JSA at the number above.

LOT # DESCRIPTION

Hours: 257

223 2013 Genie GS-1930 Scissor Lift

Location: Salt Lake City Utah

S/N: GS3013A-119422

Engine: Electric

19ft. Height, 30in. Platform Width, 500lb. Platform Capacity, 36in. Platform

Extension, AC Power Inverter, Zero Inside Turning Radius, Non-Marking Tires

This item is located at 2051 N. Redwood Rd., Salt Lake City, Utah. To preview this item call 888-230-8840 to schedule an appointment. All questions regarding this machine and/or the purchase of this machine are to be directed to JSA at the number above.

Hours: 550

225 2013 Genie GS-1930 Scissor Lift

Location: Linden Utah

S/N: GS3013A-119760

Engine: Electric

19ft. Height, 30in. Platform Width, 500lb. Platform Capacity, 36in. Platform

Extension, AC Power Inverter, Zero Inside Turning Radius, Non-Marking Tires

This item is located at 1261 West 300 South, Lindon, Utah. To preview this item call 888-230-8840 to schedule an appointment. All questions regarding this machine and/or the purchase of this machine are to be directed to JSA at the number above.

Hours: 353

226 2013 Genie GS-1930 Scissor Lift

Location: Grand Junction Colorado

S/N: GS3013A-119445

Engine: Electric

19ft. Height, 30in. Platform Width, 500lb. Platform Capacity, 36in. Platform

Extension, AC Power Inverter, Zero Inside Turning Radius, Non-Marking Tires

This item is located at 2320 Interstate Ave., Grand Junction, Colorado. To preview this item call 888-230-8840 to schedule an appointment. All questions regarding this machine and/or the purchase of this machine are to be directed to JSA at the number above.

227 2013 Genie GS-1930 Scissor Lift

Location: Englewood Colorado

S/N: GS3013A-121414

Engine: Electric

19ft. Height, 30in. Platform Width, 500lb. Platform Capacity, 36in. Platform

Extension, AC Power Inverter, Zero Inside Turning Radius, Non-Marking Tires

*This item is located at 12550 E. Broncos Pkwy., Englewood, Colorado. To preview this item call 888-230-8840 to schedule an appointment. All questions regarding this machine and/or the purchase of this machine are to be directed to JSA at the number

LOT #	DESCRIPTION
-------	-------------

above.*

228 2012 Genie GS-1930 Scissor Lift

Location: Englewood Colorado

S/N: GS3012A-113304

Engine: Electric

19ft. Height, 30in. Platform Width, 500lb. Platform Capacity, 36in. Platform

Extension, AC Power Inverter, Zero Inside Turning Radius, Non-Marking Tires

This item is located at 12550 E. Broncos Pkwy., Englewood, Colorado. To preview this item call 888-230-8840 to schedule an appointment. All questions regarding this machine and/or the purchase of this machine are to be directed to JSA at the number above.

229 2012 Skyjack SJIII 3219 Scissor Lift

Location: Salt Lake City Utah

S/N: 22030454

Engine: Electric

19ft. Height, 32in. Platform Width, 550lb. Platform Capacity, Deck Extension, 25%

Grade Ability, AC Power Inverter, Non-Marking Tires

This item is located at 2051 N. Redwood Rd., Salt Lake City, Utah. To preview this item call 888-230-8840 to schedule an appointment. All questions regarding this machine and/or the purchase of this machine are to be directed to JSA at the number above.

Hours: 228

231 2012 Skyjack SJIII 3219 Scissor Lift

Location: Ogden Utah

S/N: 22040479

Engine: Electric

19ft. Height, 32in. Platform Width, 550lb. Platform Capacity, Deck Extension, 25%

Grade Ability, AC Power Inverter, Non-Marking Tires

*This item is located at 1850 W. 1350 S. Ogden, Utah. To preview this item call 888-230-8840 to schedule an appointment. All questions regarding this machine and/or the purchase of this machine are to be directed to JSA at the number above.*** Title Delay**

Hours: 184

232 2012 Genie GR-20 Man Lift

Location: Colorado Springs Colorado

S/N: GR12-23047

Engine: Electric

20ft. Height, 350lb. Platform Capacity, 30% Grade Ability, Zero Inside Turn

Radius, Rotating Jib, 31in. Platform Width, Self Propelled, Non-Marking Tires

*This item is located at 11211 E. Cheyenne Rd., Colorado Springs, Colorado. To preview this item call 888-230-8840 to schedule an appointment. All questions

LOT # DESCRIPTION

regarding this machine and/or the purchase of this machine are to be directed to JSA at the number above.*

Hours: 138

233 2012 Genie GR-20 Man Lift

Location: Colorado Springs Colorado

S/N: GR12-22853

Engine: Electric

20ft. Height, 350lb. Platform Capacity, 30% Grade Ability, Zero Inside Turn Radius, Rotating Jib, 31in. Platform Width, Self Propelled, Non-Marking Tires

This item is located at 11211 E. Cheyenne Rd., Colorado Springs, Colorado. To preview this item call 888-230-8840 to schedule an appointment. All questions regarding this machine and/or the purchase of this machine are to be directed to JSA at the number above.

Hours: 261

234 2013 Genie GR-20 Man Lift

Location: Commerce City Colorado

S/N: GR13-26360

Engine: Electric

20ft. Height, 350lb. Platform Capacity, 30% Grade Ability, Zero Inside Turn Radius, Rotating Jib, 31in. Platform Width, Self Propelled, Non-Marking Tires

This item is located at 5420 Dahlia St., Commerce City, Colorado. To preview this item call 888-230-8840 to schedule an appointment. All questions regarding this machine and/or the purchase of this machine are to be directed to JSA at the number above.

Hours: 300

235 2012 Genie GR-20 Man Lift

Location: Salt Lake City Utah

S/N: GR12-22436

Engine: Electric

20ft. Height, 350lb. Platform Capacity, 30% Grade Ability, Zero Inside Turn Radius, Rotating Jib, 31in. Platform Width, Self Propelled, Non-Marking Tires

This item is located at 2051 N. Redwood Rd., Salt Lake City, Utah. To preview this item call 888-230-8840 to schedule an appointment. All questions regarding this machine and/or the purchase of this machine are to be directed to JSA at the number above.

Hours: 464

236 2012 Genie GR-20 Man Lift

Location: Lindon Utah

S/N: GR12-23783

Engine: Electric

20ft. Height, 350lb. Platform Capacity, 30% Grade Ability, Zero Inside Turn

LOT # DESCRIPTION

Radius, Rotating Jib, 31in. Platform Width, Self Propelled, Non-Marking Tires
 This item is located at 1261 West 300 South, Lindon, Utah. To preview this item call 888-230-8840 to schedule an appointment. All questions regarding this machine and/or the purchase of this machine are to be directed to JSA at the number above.
 Hours: 366

237 2012 Genie GR-20 Man Lift

Location: Lindon Utah
 S/N: GR12-24932
 Engine: Electric
 20ft. Height, 350lb. Platform Capacity, 30% Grade Ability, Zero Inside Turn
 Radius, Rotating Jib, 31in. Platform Width, Self Propelled, Non-Marking Tires
 This item is located at 1261 West 300 South, Lindon, Utah. To preview this item call 888-230-8840 to schedule an appointment. All questions regarding this machine and/or the purchase of this machine are to be directed to JSA at the number above.
 Hours: 365

238 2012 Genie GR-20 Man Lift

Location: Commerce City Colorado
 S/N: GR12-23170
 Engine: Electric
 20ft. Height, 350lb. Platform Capacity, 30% Grade Ability, Zero Inside Turn
 Radius, Rotating Jib, 31in. Platform Width, Self Propelled, Non-Marking Tires
 This item is located at 5420 Dahlia St., Commerce City, Colorado. To preview this item call 888-230-8840 to schedule an appointment. All questions regarding this machine and/or the purchase of this machine are to be directed to JSA at the number above.
 Hours: 194

239 2013 Allmand Night-Lite Pro Towable Light Tower

Location: Salt Lake City Utah
 S/N: 1036PRO213
 Engine: Kubota D1005 1.0L Diesel
 4000 Watt, 7.5 KW, 4 1250 Watt Lights, 3 Stabilizers, Ball Hitch
 *This item is located at 2051 N. Redwood Rd., Salt Lake City, Utah. To preview this item call 888-230-8840 to schedule an appointment. All questions regarding this machine and/or the purchase of this machine are to be directed to JSA at the number above.*** Title Delay**
 Hours: 6,233

240 2013 Allmand Night-Lite Pro Towable Light Tower

Location: Lindon Utah
 S/N: 1037PRO213
 Engine: Kubota D1005 1.0L Diesel
 4000 Watt, 7.5 KW, 4 1250 Watt Lights, 3 Stabilizers, Ball Hitch

LOT # DESCRIPTION

*This item is located at 1261 West 300 South, Lindon, Utah. To preview this item call 888-230-8840 to schedule an appointment. All questions regarding this machine and/or the purchase of this machine are to be directed to JSA at the number above.*** Title Delay**

Hours: 7,059

241 2012 Allmand Night-Lite Pro Towable Light Tower

Location: Salt Lake City Utah

S/N: 1311PRO212

Engine: Kubota D1005 1.0L Diesel

4000 Watt, 7.5 KW, 4 1250 Watt Lights, 3 Stabilizers, Ball Hitch

*This item is located at 2051 N. Redwood Rd., Salt Lake City, Utah. To preview this item call 888-230-8840 to schedule an appointment. All questions regarding this machine and/or the purchase of this machine are to be directed to JSA at the number above.*** Title Delay**

Hours: 6,155

242 2011 Wanco WLTC4 Towable Light Tower

Location: Fort Collins Colorado

S/N: 5F13D1419B1002772

Engine: Kubota D1105 1.1L Diesel

4,000 Watt, Single Phase, 6 KVA, 120/240 Volt, 50/25 Amps, 60 Hz, 4 Lights, 3 Stabilizers, Ball Hitch

*This item is located at 4228 E. Mulberry St., Fort Collins, Colorado. To preview this item call 888-230-8840 to schedule an appointment. All questions regarding this machine and/or the purchase of this machine are to be directed to JSA at the number above.*** Title Delay**

Hours: 6,082

243 2011 Wanco WLTC4 Towable Light Tower

Location: Lindon Utah

S/N: 5F13D1419B1003646

Engine: Kubota D1105 1.1L Diesel

4,000 Watt, Single Phase, 6 KVA, 120/240 Volt, 50/25 Amps, 60 Hz, 4 Lights, 3 Stabilizers, Ball Hitch

*This item is located at 1261 West 300 South, Lindon, Utah. To preview this item call 888-230-8840 to schedule an appointment. All questions regarding this machine and/or the purchase of this machine are to be directed to JSA at the number above.*** Title Delay**

Hours: 5,319

243a 2000 Allmand LP0662 Towable Light Tower

Location: Spokane Washington

S/N: 9903NLP10

Engine: Kubota 3 Cyl Diesel

LOT # DESCRIPTION

(4) Lights, Extendable Tower, P175/80R13 Tires
Hours: 8,761

244 2016 Kenworth T880 Tri-Axle Hook Truck

Location: Washougal Washington

VIN: 1NKZX4EX3GJ105702

Engine: Cummins 2013 550hp Diesel Transmission: Fuller RTL018918B 18 Speed

Swap Loader SL-520 Hook System, Roll-Rite Automatic Tarp System, 14,320lb.

Front, 11,020lb. Intermediate, 46,000lb. Rear, 3.91 Ratio, Beam Suspension, Pintle

Hitch w/Air, Lift Axle, Air Driver Seat, Power Windows, Power Mirrors, Power

Locks, Heated Mirrors, Tilt Wheel, Cruise Control, Engine Brake, Chelsae PTO,

Double Locker, A/C, AM/FM/CD w/Touch Screen, CB Radio, 385/65R22.5 Front

Tires, 255/70R22.5 Lift Tires, 11R24.5 Rear Tires** Title Delay**

Miles: 256,061

245 2016 Mack GU713 Tri-Axle Dump Truck

Location: Washougal Washington

VIN: 1M2AX07C9GM031035

Engine: Mack MP8-505M Diesel Transmission: Eaton Fuller 18 Speed

11yd Bed, 18,000lb. Front, 46,000lb. Rear, Lift Axle, Pintle Hitch w/Air,

Hendrickson Haulmax Suspension, Heated Mirrors, Power Mirrors, Cruise

Control, Engine Brake, AM/FM/CD, A/C, PTO, CB Radio, 385/65R22.5 Front

Tires, 255/70R22.5 Lift Tires, 11R22.5 Rear Tires** Title Delay**

Miles: 46,495

246 2016 Mack GU713 Tri-Axle Dump Truck

Location: Washougal Washington

VIN: 1M2AX07C7GM031034

Engine: Mack MP8-505M Diesel Transmission: Eaton Fuller 18 Speed

11yd Bed, 18,000lb. Front, 46,000lb. Rear, Lift Axle, Pintle Hitch w/Air,

Hendrickson Haulmax Suspension, Heated Mirrors, Power Mirrors, Cruise

Control, Engine Brake, AM/FM/CD, A/C, PTO, CB Radio, 385/65R22.5 **Front

Tires, 255/70R22.5 Lift Tires, 11R22.5 Rear Tires** Title Delay**

Miles: 50,044

247 1991 Freightliner FLD Tri Axle Dump Truck

Location: Spokane Washington

VIN: 1FU YDRYB2MP396679

Engine: Caterpillar 6 Cyl Turbo Diesel Transmission: Eaton Fuller 8LL

16ft Dump Box, 12-15YD Capacity, High Sides, Pintle Hitch w/Air & Hydraulic

Q/C, 12,000lb Front Axle, 34,000lb Rears, Hendrickson 13,000lb Lift Axle,

Spring/Beam Suspension, Inter-Axle Lock, Muncie PTO w/Air Shift Control Box,

Air Ride Seat, Cruise Control, Heated Mirrors, A/C, AM/FM, CB, 285/75R24.5

Front Tires, 255/70R22.5 Lift Tires, 11R24.5 Rear Tires, Customer States *Rebuilt

Transmission (2018), Differentials (2018), Bearings In Motor (2018), New

LOT # DESCRIPTION

Hydraulic Cylinder (2016)*** Title Delay**
Miles: 745,466

248 Kenworth W900B Quad Axle Mixer Truck

Location: Washougal Washington
VIN: 1NKWL90X8TS671670
Engine: Cummins M11 Diesel Transmission: Fuller RT014709MLL 9 Speed
McNeilus 11 cu. yd. Mixer Body, 5.38 Axle Ratio, (2) Lift Axles, Mixer Strong
Arm, Air Driver Seat, PTO, Cruise Control, Heated Mirrors, A/C, 2582 Engine
Hours indicated, 425/65R22.5 Front Tires, 255/70R22.5 Lift Tires, 11R22.5 Rear
Tires, 11R22.5 Strong Arm Tires
Miles: 511 Indicated

249 2005 Kenworth T300 Service Truck

Location: Spokane Washington
VIN: 1156474
Engine: Caterpillar C7 Acert 250 HP Diesel Transmission: Fuller RT8709B 9 Speed
Carco (10) Compartment Service Box, Auto Crane 8406H Crane, 28ft Height, 20ft
Reach, (2) Outriggers, Miller Bobcat 250 Welder/Generator, 10,000 Watt, 538 Hrs,
Subaru Robin 22HP Motor, Hydraulic Tank w/V-Twin Pump, Chain/Hose Rack, (6)
D-Ring Tie Downs, 13,000lb Front Axle, 20,000lb Rear, 3.90 Ratio, Spring
Suspension, Air Ride Seat, Diff Lock, Engine Brake, Cruise Control, Power
Passenger Window, Heated Mirrors, Chelsea PTO, AM/FM, A/C, CB, Aluminum
Wheels, 11R22.5 Tires** Title Delay**

250 2006 International 4300 Bucket Truck

Location: Washougal Washington
VIN: 1HTMMAAP06H345145
Engine: International DT466 7.6L Turbo Diesel Transmission: Eaton Fuller 6 Speed
Chipper Body w/4 Compartments, Terex Hiranger XT55 Boom, 55ft. Height, 350lb.
Bucket Capacity, 2 Outriggers, 10,000lb. Front, 19,000lb. Rear, Spring Suspension,
Muncie PTO, Cruise Control, A/C, 11R22.5 Tires** Title Delay**
Miles: 89,587

251 1993 Freightliner M916A1 6x6 T/A Water Truck

Location: Washougal Washington
VIN: 1FUCMZYB7PP521206
Engine: Detroit Series 60 400hp Diesel Transmission: Allison HT-740 Automatic
2016 Randco 4,000 Gallon Tank (new) w/Baffles, Front/Side/Rear Discharge, Self
Load Capable, Forest Service Ready, 16,000lb. Front, 52,000lb. Rear, 4.89 Ratio,
Spring Suspension, 204in. Wheel Base, PTO, Hose Reel w/Hose, (2) 1 1/2in.
Couplers, (2) 2 1/2in. Couplers, (1) 3in. Coupler, Berkeley Water Pump, Hydraulic
Tank, Under Body Tool Box, Diff Lock, 2 & 4 cyl Engine Brakes, Steel Wheels,
315/80R22.5 Tires
Miles: 9,368 indicated

LOT # DESCRIPTION

252 1999 International 4900 T/A Water Truck

Location: Spokane Washington

VIN: 1HTSHAAR0XH244394

Engine: International B250 Turbo Diesel Transmission: Spicer 10 Speed

4,000 Gal Water Tank Capacity, Front/Side/Rear Water Discharge, Water Hose On

Reel, 12,000lb Front Axle, 40,000lb Rears, Spring/Beam Suspension, 218in Wheel

Base, Muncie PTO, Power Divider, Air Ride Seat, A/C, Cruise Control,

AM/FM/CD; 11R22.5 Tires, 9,627 Hours Indicated

Miles: 27,433

253 1999 International 4900 T/A Water Truck

Location: Spokane Washington

VIN: 1HTSHAAR7XH244411

Engine: International B250 Turbo Diesel Transmission: Spicer Manual

4,000 Gal Water Tank Capacity, Front/Side/Rear Water Discharge, Water Hose On

Reel, 12,000lb Front Axle, 40,000lb Rears, Spring/Beam Suspension, 218in Wheel

Base, Muncie PTO, Power Divider, Air Ride Seat, A/C, Cruise Control, AM/FM;

11R22.5 Tires, 449 Hours Indicated

Miles: 9,854

254 1995 Ford L9000 T/A Water Truck

Location: Washougal Washington

VIN: 1FTYS95B6SVA30492

Engine: Detroit Series 60 Diesel Transmission: Eaton Fuller 9 Speed

4,000 Gallon Tank, Front, Side & Rear Discharge, Hose Reel w/Hose, Spring

Suspension, Air Driver Seat, Muncie PTO, 12,000lb. Front, 45,400lb. Rear, 143in.

Wheel Base, 11R24.5 Tires

Miles: 1,302 indicated

255 2013 Volvo VNM T/A Tanker Truck

Location: Spokane Washington

VIN: 4V5MC9DG6DN150935

Engine: Volvo D11 385 HP Turbo Diesel Transmission: Eaton Fuller 10 Speed

2002 Paramount Aluminum 4,000 Gal Tank, 28,660 Payload, 500 GPM Unload

Rate, 12,500lb Front Axle, 40,000lb Rear, Spring Suspension, A/C, Air Ride Seat,

445/50R22.5 Super Singles

Miles: 429,235

256 2011 Peterbilt 384 T/A Tanker Truck

Location: Spokane Washington

VIN: 1NPVLU9X3BD119508

Engine: Caterpillar C13 Acert Turbo Diesel Transmission: Eaton Fuller 10 Speed

1990 Beall Aluminum 4,600lb Gal Tank, Pintle Hitch w/Air Hookup, 12,000lb

Front, 38,000lb Rear, Air Bag Suspension, Air Dump, Engine Brake, Cruise

Control, Air Ride Seat, AM/FM/CD, A/C, Aluminum Wheels, 295/75R22.5 Front

LOT #	DESCRIPTION
-------	-------------

Tires, 445/50R22.5 Rears
Miles: 761,882

257 2011 Peterbilt 384 T/A Tanker Truck

Location: Spokane Washington
VIN: 1NPVLU9X5BD119512
Engine: Caterpillar C13 Acert Turbo Diesel Transmission: Eaton Fuller 10 Speed
1990 Beall Aluminum 4,600 Gal Tank, 33,120lb Payload, 12,000lb Front, 38,000lb
Rear, Engine Brake, Cruise Control, AM/FM/CD, A/C, Air Ride Seat, Pintle Hitch
w/Air Hookup, Aluminum Wheels, 445/50R22.5 Super Singles
Miles: 779,125

258 2007 Peterbilt 385 T/A Tanker Truck

Location: Spokane Washington
VIN: 1NPGLU9X27D731957
Engine: Caterpillar C13 Acert Turbo Diesel Transmission: Eaton Fuller 10 Speed
1990 Beall 4,600 Gal Tank, 33,120lb Capacity, 12,000lb Front, 38,000lb Rears, Air
Bag Suspension, Dual Fuel Tanks, Pintle Hitch w/Air Hookup, Air Ride Driver
Seat, Aluminum Wheels, 275/80R22.5 Front Tires, 445/50R22.5 Super Singles
Miles: 1,147,893

259 2007 Peterbilt 385 T/A Tanker Truck

Location: Spokane Washington
VIN: 1NPGLU9X17D731951
Engine: Caterpillar C13 Acert Turbo Diesel Transmission: Eaton Fuller 10 Speed
1996 Weld-It Aluminum 4,500 Gal Fuel Tank, 12,000lb Front Axle, 38,000lb Rears,
Air Bag Suspension, Air Dump, Diff Lock, Engine Brake, Cruise Control,
AM/FM/CD, A/C, Aluminum Wheels, 445/50R22.5 Super Singles
Miles: 1,448,106

260 2007 Peterbilt 385 T/A Tanker Truck

Location: Spokane Washington
VIN: 1NPGLU9XX7D731950
Engine: Caterpillar C13 Acert Turbo Diesel Transmission: Eaton Fuller 10 Speed
1993 Weld-It Aluminum 4,500 Gal Fuel Tank, 28,000lb Payload, 12,000lb Front,
38,000lb Rears, Air Bag Suspension, Air Dump, Diff Lock, Engine Brake, Cruise
Control, AM/FM/CD, A/C, Air Ride Seat, 455/50R22.5 Super Single Tires

261 2000 Paramount Pup Tanker Trailer

Location: Spokane Washington
VIN: 1PXF25260YP027803
2000 Paramount Aluminum 5,200 Gal Tank, 30,420lb Payload, 18,740 Front Axle,
18,740 Rear, Spring Suspension, Pintle Hitch, Air Brakes, Aluminum Wheels *This
Trailer Matches up with the 2011 Peterbilt 384 w/1990 Beall Tank (Truck Sold
Seperately)*

LOT # DESCRIPTION

262 1999 Weld It Pup Tanker Trailer

Location: Spokane Washington

VIN: 1W9T22268XL010128

1999 Weld It Aluminum 5,600 Gal Tank, 32,500lb Payload, 20,000lb Front Axle, 20,000lb Rear, Spring Suspension, Pintle Hitch, Air Brakes, Aluminum Wheels,

This Trailer Matches Up With The 2013 Volvo w/2002 Tank (Truck Sold Separately)

263 1996 Weld It Pup Tanker Trailer

Location: Spokane Washington

VIN: 1W9T23264TL010031

1996 Weld-it Aluminum 5,600 Gal Fuel Tank, 33,000lb Payload, 600 GPM Load Rate At 1 PSIG, 20,000lb Front Axle, 20,000lb Rear, Spring Suspension, Aluminum Wheels, *This Trailer Matches Up With the 2007 Peterbilt 385 Tanker w/1996 Weld-It Tank (Truck Sold Separately)*

264 1989 Fruehauf Pup Tanker Trailer

Location: Spokane Washington

VIN: 1H4T02323KL005909

1989 Aluminum 5,100 Gal Fuel Tank, 18,000lb Front Axle, 18,000lb Rear, Spring Suspension, Pintle Hitch, Air Brakes, Aluminum Wheels *This Trailer Matches Up With The 2007 Peterbilt 385 w/1993 Weld-It Tank (Truck Sold Separately)*

265 2007 Peterbilt 378 T/A Truck Tractor

Location: Spokane Washington

VIN: 1XPFD49XX7D666290

Engine: Cummins 6 Cyl Turbo Diesel Transmission: Eaton Fuller 10 Speed Air Slide Fifth Wheel, Pintle Hitch, Storage Box, 12,000lb Front Axle, 38,000lb Rears, Spring Suspension, Air Ride Seat, Diff Lock, Engine Brake, Cruise Control, Fog Lights, AM/FM/CD, A/C, Passenger Power Window, Heated Mirrors, Power Mirrors, 11R22.5 Tires, *Possible Engine Issues*

Miles: 1,320,146

265a 2006 Freightliner Columbia 120 T/A Sleeper Truck T

Location: Washougal Washington

VIN: 1FUJA6CV26DX06943

Engine: Mercedes Benz 450 HP Turbo Diesel Transmission: Fuller RTLO-16913A 13 Speed

12,000lb Front Axle, 40,000lb Rears, Air Ride Suspension, 3.07 Axle Ratio, 244in Wheel Base, Air Slide Fifth Wheel, Engine Brake, Power Steering, 70in Double Bunk Condo Sleeper, Dual Air Ride Seats, Power Windows, Power Mirrors, Heated Mirrors, Tilt/Tele Wheel, AM/FM/CD, A/C, 295/75R22.5 Front Tires, 255/70R22.5 Rear Tires

Miles: 1,307,962

LOT # DESCRIPTION

266 1994 Freightliner FLD120 T/A Sleeper Truck

Location: Washougal Washington

VIN: 1FUVDSEB9RH569143

Engine: Detroit Series 60 370 HP Turbo Diesel Transmission: Eaton Fuller 18 Speed

Air Slide Fifth Wheel, Raised Roof Double Bunk Sleeper, 12,000lb Front, 40,000 Rear, Air Suspension, Air Dump, Engine Brake, Inter-Axle Lock, AM/FM/CD, Air Ride Seat, A/C, CB, 295/75R22.5 Tires
Miles: 334,495

267 1984 Mack R686ST T/A Truck Tractor

Location: Spokane Washington

VIN: 1M2N179C1EA093598

Engine: Mack Diesel Transmission: Eaton Fuller 9 Speed

Fifth Wheel, Wet Kit, Pintle Hitch w/Air, Spring Suspension, Jacobs Engine Brake, Tilt Wheel, Air Ride Seat, Muncie PTO, Mirror Heat, CB, 11R22.5 Tires, *Unit Comes With 12YD Dump Box That Fits On Truck* ** Title Delay**

Miles: 66,856 indicated

268 2002 Freightliner FL70 S/A Service Truck

Location: Washougal Washington

VIN: 1FVABTAK12DK44949

Engine: Caterpillar 3126 250HP Turbo Diesel Transmission: Allison MD-3060PL Automatic

(10) Enclosed Compartment Service Box, Enclosed Bed, Interior Shelving, IMT 1007 Knuckle Crane w/Strong Arm Winch, Hydraulic Tank w/Plumbed Q/C Couplers, Air Q/C Couplers, LED Strobe Lights, Rear Work Light, 12,000lb Front Axle, 23,000lb Rear, 5.63 Ratio, Spring Suspension, 186in Wheel Base, Tow Package, Air Brakes, Chelsea PTO, Driver Air Ride Seat, Heated Mirrors, Cruise Control, AM/FM, A/C, 275/80R22.5 Front Tires, 11R22.5 Rear Tires **Title Delay**

Miles: 74,398

269 1998 Ford F700 Platform Truck

Location: Washougal Washington

VIN: 1FDYF70J8WVA11130

Engine: 7.0L V8 Gas Transmission: 5 Speed + 2 Speed Axle

Hi-Rail Gear Installed, Ramsey Pro-9000X Winch, Aerolift STVH-30 5ft. x 12ft. Platform Lift, 30ft. Height, 1,200lb. Capacity, (4) Outriggers, Enclosed Utility Body w/6 Compartments, Ball Hitch w/Air, 38 Gallon Hydraulic Tank, 12,000lb. Front, 23,000lb. Rear, Chelsae PTO, Rear View Camera, Sun Roof, 11R22.5 Tires
Miles: 32,023

LOT # DESCRIPTION

270 2005 International 9200i S/A Truck Tractor

Location: Washougal Washington

VIN: 3HSCDSBN65N039588

Engine: Caterpillar C13 Diesel Transmission: Meritor 10 Speed

Air Ride Suspension, 395in. Wheel Base, Pintle Hitch, Air Brakes, Heated Mirrors,
Dual Air Seats, AM/FM, Cruise Control, A/C, Engine Brake, 295/75R22.5 Tires**

Title Delay**

Miles: 1,059,525

272 Freightliner S/A Truck Tractor

Location: Spokane Washington

Engine: Cummins NTC-315 Diesel

273 2001 Freightliner FL80 T/A Flatbed Truck

Location: Spokane Washington

VIN: 1FVHBXAK81HJ37362

Engine: Caterpillar 3126 Diesel Transmission: Eaton Fuller 9 Speed

8ft x 22ft Flatbed, Wood Deck, Cab Guard, 12,000lb. Front Axle, 40,000lb. Rear,

Air Bag Suspension, (2) Storage Boxes, Air Ride Seat, Cruise Control, Heated

Mirrors, Diff Lock, A/C, AM/FM/Cassette, 11R22.5 Tires

Miles: 174,488

274 1990 International 7100 S/A Cab & Chassis

Location: Washougal Washington

VIN: 1HSHATVN5LH275477

Engine: International DT466 Diesel Transmission: Automatic

Spring Suspension, 144in. Wheel Base, Heated Mirrors, AM/FM, A/C, Air Brakes,

11R22.5 Tires

Miles: 232,680 indicated

275 1995 Kenworth T300 Curtain Van Truck

Location: Spokane Washington

VIN: 2NKM77X8SM66320

Engine: Cummins 6CTA Turbo Diesel Transmission: Eaton 6 Speed

Nuvan 23ft Curtain Side Box, Whiting Roll Up Door, Tuck Under Electric Lift

Gate, 12,000lb Front Axle, 21,000lb Rear, 4.11 Ratio, Spring Suspension, Ratchet

Strap Winches, Protech Steel Storage Box, Nose Cone, Air Ride Seat, A/C, Heated

Mirrors, AM/FM/Cassette, 11R22.5 Front Tires, 275/80R24.5 Rear Tires

Miles: 323,470

276 1985 International S1900 S/A Reefer Truck

Location: Washougal Washington

VIN: 1HTLDUXN1FHA44213

Engine: International DT466 Diesel Transmission: 5+2 Speed

20ft. Morgan Reefer Body, Aluminum Floor, Thermo King Reefer (Only Works on

LOT #	DESCRIPTION
-------	-------------

Electric Stand By), Spring Suspension, 218 in. Wheel Base, Steel Wheels
Miles: 122,707 indicated

277 1977 International Loadstar 1700 AWD Dump/Flatbed

Location: Spokane Washington

VIN: D0622GHA26479

Engine: V8 Gas Transmission: 5 Speed

8ft x 12ft Hydraulic Dump Flatbed, Wood Deck, Cab Guard, Electric Brakes,

10.00-20 Tires, *Non-Operational*** Title Delay**

Miles: 34,758 Indicated

278 1970 Osh Kosh P1834 Digger Derrick Truck

Location: Kingston Idaho

VIN: 11395

Engine: Diesel

Telelect Boom, Winch, 4836 Engine Hours Indicated, 2194 Boom Hours Indicated

Unit Can Be Delivered To Spokane Facility - Post Auction, If Needed

Miles: 104,798 indicated

279 1954 Osh Kosh M-62 6x6 Wrecker Truck

Location: Spokane Washington

VIN: 3978

Engine: Diesel Transmission: 5 Speed

5 Ton Boom, 2-Stage Boom, Boom Supports For More Capacity, Tulsa Winch

w/Steel Cable Line, Cable Line Pull, Winch Bumper w/Line Tensioners,

Beam/Spring Suspension, Pintle Hitch, Cab Heater, 2,204 Hrs Indicated, *Unit Has

Brake Issues*

Miles: 243 indicated

280 2005 Workhorse FT1261 Step Van

Location: Washougal Washington

VIN: 5T4HP41V453411268

Engine: 4.8L V8 Gas Transmission: Automatic

Wood Storage Shelves, Swing Away Rear Doors, AM/FM/CD, A/C, LT215/85R16

Tires

Miles: 79,342

281 2001 Workhorse P31042 Step Van

Location: Washougal Washington

VIN: 5B4HP42R813331237

Engine: V8 Gas Transmission: Automatic

Cab Guard, Wood Storage Drawers/Shelves/Cabinets, AM/FM/CD/Aux,

A/C,4,000lb. Front, 7,900lb. Rear, LT215/85R16 Tires

Miles: 84,833

LOT # DESCRIPTION

281a 2006 International 4300 Box Truck

Location: Spokane Washington

VIN: 1HTMMAAN76H179379

Engine: International Transmission: Eaton 6 Speed

22ft Box w/Dump Capability, (2) Sections - 17ft Shred Waste, 5ft Shredder Space,

Prepped For Shredder w/Hydraulics, 12,000lb Front Axle, 21,000lb Rear, Spring

Suspension, Air Ride Seat, (2) PTO, Heated Mirrors, Cruise Control, A/C,

AM/FM/Cassette, 295/75R22.5 Tires

Miles: 214,767

282 2005 MCI D4000 Passenger Transport Bus

Location: Washougal Washington

VIN: 1M81DMPA55PO56451

Engine: Detroit 12.7L 6 Cyl Turbo Diesel Transmission: Allison Automatic

Motor Coach Industries D4000, (44) Passenger Capacity, (32) General Seating, (6)

Partial Solitary Seats, (6) Solitary Confinement Seating, Front Axle 16,000lbs, Rear

22,500lbs, Tag 10,000lbs, Air Ride Suspension, (3) Full Width Underbody Storage

Compartments, Interior/Exterior Camera System, PA System,(3) Air Ride Seats,

Power Steering, AM/FM/CD, A/C, Cruise Control, Tilt/Telescopic Wheel,

LT 315/80R22.5 Tires

Miles: 219,502

283 2009 Ford E450 SD Aerotech Transit Bus

Location: Washougal Washington

VIN: 1FDFE45SX9DA21257

Engine: 6.8L Gas Transmission: Automatic

Eldorado Bus Body, Wheel Chair Lift, 1,459lb. Front, 9,500lb. Rear, Spring

Suspension, 160in. Wheel Base, A/C, Dual Climate Controls, Cruise Control, Tilt

Wheel, Battery Shut Off Switch, Steel Wheels, 225/75R16 Tires

Miles: 114,310

284 2011 Chevrolet G4500 Aerotech Transit Bus

Location: Washougal Washington

VIN: 1GB6G5BL8B1112072

Engine: Duramax 6.6L Diesel Transmission: Automatic

Eldorado Bus Body, Wheelchair Lift, 4,600lb. Front, 9,600lb. Rear, Spring

Suspension, 165in. Wheel Base, Power Mirrors, Heated Mirrors, AM/FM/CD, A/C,

Cruise Control, Tilt Wheel, Transmission Lock, Steel Wheels, 225/75R16 Tires**

Title Delay**

Miles: 212,226

285 2011 Chevrolet G4500 Aerotech Transit Bus

Location: Washougal Washington

VIN: 1GB6G5BL1B1112138

Engine: Duramax 6.6L Diesel Transmission: Automatic

Live Online Heavy Equipment & Commercial Truck 4/29/2020

LOT #	DESCRIPTION
-------	-------------

Eldorado Bus Body, Wheelchair Lift, 4,600lb. Front, 9,600lb. Rear, Spring Suspension, 165in. Wheel Base, Power Mirrors, Heated Mirrors, AM/FM/CD, A/C, Cruise Control, Tilt Wheel, Transmission Lock, Steel Wheels, 225/75R16 Tires**
Title Delay**
Miles: 208,233

286 2011 Chevrolet G4500 Aerotech Transit Bus

Location: Washougal Washington
VIN: 1GB6G5BL1B1112530
Engine: Duramax 6.6L Diesel Transmission: Automatic
Eldorado Bus Body, Wheelchair Lift, 4,600lb. Front, 9,600lb. Rear, Spring Suspension, 165in. Wheel Base, Power Mirrors, Heated Mirrors, AM/FM/CD, A/C, Cruise Control, Tilt Wheel, Transmission Lock, Steel Wheels, 225/75R16 Tires**
Title Delay**
Miles: 223,201

287 2018 Trailmax TRD-54-T Tri-Axle Equipment Trailer

Location: Washougal Washington
VIN: 5UCPT373XJA003250
30ft. x 8ft. 6in. Wood Deck, 5ft. Front Deck Section, 25ft. Tilt Deck Section, Pintle Hitch, Air Brakes, Spring Suspension, 215/75R17.5 Tires** Title Delay**

288 2007 Trailmax TRD-54T Tri-Axle Equipment Trailer

Location: Spokane Washington
VIN: 5UCPT373X7A000051
Wood Deck, Pintle Hitch

289 2002 Olympic 30T DT3 Tri-Axle Equipment Trailer

Location: Spokane Washington
VIN: 4Z9TF36372T091911
Wood Tilt Deck, Spring Suspension, Air Brakes, D-Rings, (2) Covered Chain Trays, Pintle Hitch

290 Fontaine 48ft T/A Step Deck Trailer

Location: Spokane Washington
75,000lb GVWR, 21,000lb Axles, 38ft Main Deck, 10ft Upper Deck, 96in Wide, Wood Deck, Stake Pockets, Strap Winches, (2) Protech Storage Boxes, Pintle Hitch, 255/70R22.5 Tires** Title Delay**

291 2002 Beall Quad Axle Transfer Trailer

Location: Washougal Washington
VIN: 1BN1P29472X001019
14 yd., Air Brakes, Pintle Hitch, 385/65R22.5 Tires

LOT #	DESCRIPTION
292	1979 Tri-Axle Pup Trailer Location: Spokane Washington VIN: 66041 13ft Aluminum Dump Box, Steel Floor, 15 Ton Capacity, 4-Stage Hydraulic Cylinder, Air Brakes, Extending Tongue, 385/65R22.5 Tires ** Title Delay**
293	2000 Reliance ATBT-48P-3 Chip Trailer Location: Washougal Washington VIN: 5RESX0387YS005014 Tri-Axle, Possum Belly, 48ft., Air Brakes, Beam Suspension, 17,000lb. Axles, 285/75R24.5 Tires
294	2000 Reliance ATBT-48P-3 Chip Trailer Location: Washougal Washington VIN: 5RESX0380YS005016 Tri-Axle, Possum Belly, 48ft., Air Brakes, Beam Suspension, 17,000lb. Axles, 285/75R24.5 Tires
295	2000 Reliance ATBT-48P-3 Chip Trailer Location: Washougal Washington VIN: 5RESX0383YS005012 Tri-Axle, Possum Belly, 48ft., Air Brakes, Beam Suspension, 17,000lb. Axles, 285/75R24.5 Tires
296	2000 Reliance ATBT-48P-3 Chip Trailer Location: Washougal Washington VIN: 5RESX0389YS005015 Tri-Axle, Possum Belly, 48ft., Air Brakes, Beam Suspension, 17,000lb. Axles, 285/75R24.5 Tires
297	1981 14-Bay Beverage Trailer Location: Washougal Washington VIN: 81M01924 14 Bay, Air Brakes, Spring Suspension
297a	Shop Built T/A Flatbed Trailer Location: Spokane Washington 20ft Deck Length, 3ft Tail, Wood Deck Spring Suspension, Electric Trailer Brakes, 2-5/16in Ball
298	Shop Built S/A Utility Trailer Location Washougal Washington (4) Enclosed Storage Boxes, (2) Weatherguard Boxes, Homelite GD-12000-1 12 KW Generator, Single Phase, Lombardini L27 Gas Engine, Air Cooled, Power Cable Reel w/Extension Cable, Distribution Panel w/(5) 20 Amp Sold on Bill of Sale, No title required in Oregon, State of WA buyer will need to Title

LOT # DESCRIPTION

299 2009 Ford F450 XL SD 4x4 Extra Cab Dump Truck

Location: Washougal Washington

VIN: 1FDAX47R29EA32830

Engine: Powerstroke 6.4L V8 Turbo Diesel Transmission: Automatic

ABC 3 yd. Bed, Vantage Safety Light Bar, Tow Package, 7,000lb. Front, 12,000lb.

Rear, Spring Suspension, Under Bed Tool Box, Tube Running Boards, Tilt Wheel,

A/C, AM/FM, Split Rear Bench Seat, 225/70R19.5 Tires, *Possible Engine Issue

(knocks)*

Miles: 85,612

299a 2008 Ford F450 XL SD Flatbed Truck

Location: Washougal Washington

VIN: 1FDXF46R48EC15191

Engine: Powerstroke 6.4L V8 Turbo Diesel Transmission: 5 Speed

SE Inc. 12ft. Bed, 4 Highway Products Side Mount Truck Boxes, Challenger

Diamond Plate tool Box, Lumber Rack, Running Boards, Spring Suspension,

AM/FM, A/C, 225/70R19.5 Tires

Miles: 106,656

300 2004 Ford F450 SD Lariat Crew Cab Flatbed

Location: Spokane Washington

VIN: 1FDXW46P84EB20965

Engine: Powerstroke 6.0L V8 Turbo Diesel Transmission: Automatic

8ft x 9ft Flatbed, Wood Deck, Tow Package, Pintle Hitch, Gooseneck Hitch, Delta

Fuel Tank w/Fil-Rite 15 GPM Pump, Power Windows, Power locks, Power Mirrors,

Leather Seats, Dual Power Seats, AM/FM/CD/AUX, A/C, Cruise Control,

LT225/70R19.5 Tires** Title Delay**

Miles: 149,509

300a 2003 Ford F550 XL SD Flatbed Truck

Location: Washougal Washington

VIN: 1FDAF56P53EC37235

Engine: Powerstroke V8 Turbo Diesel Transmission: Automatic

Workman 14ft. Flatbed, Concrete Shute, Diamond Plate Storage Drum, Running

Boards, Cruise Control, Tilt Wheel, Spring Suspension, A/C, AM/FM/CD/Cassette,

225/70R19.5 Tires

Miles: 141,754

302 1999 Chevrolet Utility Truck

Location: Spokane Washington

VIN: 1GBJC34J2XF007513

Engine: Vortec Gas

Enclosed Utility Body w/6 Compartments

Miles: 164,030

LOT # DESCRIPTION

303 2006 Ford F250 XLT SD 4x4 Pickup

Location: Spokane Washington

VIN: 1FTSF21P26ED83336

Engine: Powerstroke 6.0L Turbo Diesel Transmission: Automatic

Meyer Straight Blade Snow Plow w/Wing Kit & Remote Control, Power Windows,

Power Locks, Power Mirrors, Driver Power Seat, AM/FM/CD, A/C, Electronic

Shift 4WD, Cruise Control, Tilt Wheel, Spray-In Bed Liner, Tow Package, *Turbo

Diesel Engine Re-Built @ 166,749 Miles* **Title Delay**

Miles: 170,826

304 2006 Ford F250 XL SD Pickup

Location: Spokane Washington

VIN: 1FTNF20566EB39721

Engine: Triton 5.4L Gas Transmission: Automatic

Miles: 299,149

305 2001 Ford F250 XLT SD 4x4 Extra Cab Pickup

Location: Spokane Washington

VIN: 1FTNX21F11EA26711

Engine: Powerstroke 7.3L Turbo Diesel Transmission: Automatic

Meyer V-Blade Snow Plow w/Remote Control, Power Windows, Power Locks,

AM/FM/CD, A/C, Cruise Control, Tilt Wheel, Tow Package, *Turbo Diesel Engine

Replaced @ 271,719mi w/Crate Diesel Engine* *Truck C/W (2) Sets of Rims/Tires

- (1) Set of Hankook LT285/75R17 A/T Tires; (1) Set of Studded Snow Tires

Mounted On Ford Rims* **Title Delay**

Miles: 332,316

306 2001 Ford F250 XLT SD 4x4 Extra Cab Pickup

Location: Spokane Washington

VIN: 1FTNX21F01EA26764

Engine: Powerstroke 7.3L Turbo Diesel Transmission: Automatic

Power Windows, Power Locks, Power Mirrors, AM/FM, A/C, Tilt Wheel, Cruise

Control, Drop-In Bed Liner, Tow Package, *Turbo Diesel Engine Replaced

w/Complete Remanufactured Engine On 6/1/15*

Miles: 412,327

307 2010 Ford F150 XL Extra Cab Pickup

Location: Washougal Washington

VIN: 1FTEX1CW5AKE61305

Engine: Triton 4.6L Gas Transmission: Automatic

7ft. Bed, Spring Suspension, 145in. Wheel Base, Canopies Unlimited Canopy w/1

Compartment, Tow Package, Beacon Light, Power Windows, Power Mirrors, Power

Locks, Tilt Wheel, A/C, AM/FM, Rear Bench Seat, 235/75R17 Tires

Miles: 99,948

LOT # DESCRIPTION

308 2005 Ford Ranger XLT Extra Cab Pickup

Location: Washougal Washington

VIN: 1FTYR44UX5PA75641

Engine: 3.0L V6 Gas Transmission: Automatic

6ft. Bed, Spring Suspension, 126in. Wheel Base, Better Built Diamond Plate Tool

Box, Power Windows, Power Mirrors, Power Locks, Tilt Wheel, Cruise Control,

A/C, AM/FM/CD, Jump Seats, P225/70R15 Tires

Miles: 119,531

310 2001 GMC Sonoma SL Extra Cab Pickup

Location: Washougal Washington

VIN: 1GTCS19W518213128

Engine: Vortec V6 4.3L Gas Transmission: Automatic

6ft. Bed, Spring Suspension, Rawson-Koenig Side Mount Tool Box, Bed Liner Mat,

Safety Beacon Stand, Tilt Wheel, Cruise Control, A/C, AM/FM, 215/70R15 Tires

Miles: 46,917

311 2008 Ford E350 XL Cargo Van

Location: Washougal Washington

VIN: 1FTSE34L28DB05062

Engine: 5.4L V8 Gas Transmission: Automatic

Ladder Rack, Cab Guard, Power Windows, Power Mirrors, Power Locks, Tilt

Wheel, Traction Control, A/C, AM/FM, Storage Shelves/Cabinets/Drawers,

LT245/75R16 Tires

Miles: 74,741

312 2007 GMC Savana Pro Cargo Van

Location: Washougal Washington

VIN: 1GTGG25V971216119

Engine: Vortec 4.8L Gas Transmission: Automatic

Spring Suspension, 140in. Wheel Base, Loadrite Dual Side Ladder Rack, Power

Windows, Power Mirrors, Power Locks, AM/FM/CD, A/C, Heated Mirrors, Cab

Guard w/Service Door, Storage Drawers & Shelves, Steel Wheels, 245/75R16 Tires

Miles: 70,597

313 2005 Chevrolet 2500 Express Cargo Van

Location: Washougal Washington

VIN: 1GCGG25V951233774

Engine: Vortec 4.8L Gas Transmission: Automatic

Spring Suspension, 140in. Wheel Base, Power Windows, Power Mirrors, Power

Locks, Heated Mirrors, A/C, AM/FM, Roof Rack w/Diamond Plate Pipe Box, Cab

Guard w/Service Door, Storage Shelves, Tow Package, 245/75R16 Tires

Miles: 89,681

LOT # DESCRIPTION

314 1991 GMC G2500 Vandura Cargo Van

Location: Washougal Washington

VIN: 1GTEG25H5M7511387

Engine: 5.0L Gas Transmission: Automatic

Tow Package, Truckstell Cab Guard, A/C, AM/FM, LT235/75R15 Tires

Miles: 35,586

315 2008 Dodge Caravan Cargo Van

Location: Washougal Washington

VIN: 1D4HN11H58B190492

Engine: 3.3L V6 Gas Transmission: Automatic

Power Windows, Power Mirrors, Power Locks, Cab Guard, AM/FM/CD, A/C, Tilt

Wheel, 225/65R16 Tires

Miles: 118,336

316 2007 Dodge Grand Caravan C/V Cargo Van

Location: Washougal Washington

VIN: 1D4GP23R07B251800

Engine: 3.3L V6 Gas Transmission: Automatic

Power Windows, Power Mirrors, Power Locks, Cruise Control, Tilt Wheel, A/C,

AM/FM/CD, Cab Guard, 215/65R16 Tires

Miles: 31,587

317 2007 Dodge Grand Caravan C/V Cargo Van

Location: Washougal Washington

VIN: 1D4GP23R47B251802

Engine: 3.3L V6 Gas Transmission: Automatic

Ladder Rack, Power Windows, Power Mirrors, Power Locks, Cruise Control, Tilt

Wheel, A/C, AM/FM/CD, Cab Guard, 215/65R16 Tires

Miles: 57,230

318 2007 Dodge Grand Caravan C/V Cargo Van

Location: Washougal Washington

VIN: 1D4GP23R87B251799

Engine: 3.3L V6 Gas Transmission: Automatic

Ladder Rack w/Pipe Tube, Power Windows, Power Mirrors, Power Locks, Cruise

Control, Tilt Wheel, A/C, AM/FM/CD, Cab Guard, 215/65R16 Tires

Miles: 55,502

319 2007 Ford E350 XL SD Passenger Van

Location: Washougal Washington

VIN: 1FBSS31L97DB13241

Engine: 5.8L V8 Gas Transmission: Automatic

Running Boards, 3rd Row Seat, 4th Row Seat, Power Windows, Power Mirrors,

Power Locks, Heated Mirrors, Cruise Control, Tilt Wheel, A/C, AM/FM,

LOT #	DESCRIPTION
-------	-------------

LT245/75R16 Tires
Miles: 136,884

320 2006 Dodge Caravan Passenger Van

Location: Washougal Washington
VIN: 1D8GP24E56B731274
Engine: 3.3L V6 Gas Transmission: Automatic
Power Windows, Power Mirrors, Power Locks, Cruise Control, A/C, Dual Climate Controls, AM/FM/CD, 3rd Row Seat, 215/70R15 Tires
Miles: 48,471

321 2012 Dodge Charger Sedan

Location: Washougal Washington
VIN: 2C3CDXAT2CH263940
Engine: 5.7L V8 Gas Transmission: Automatic
Power Windows, Power Locks, Power Mirrors, Power Driver Seat, AM/FM/CD w/ Steering Wheel Controls, Bluetooth, A/C, Cruise Control, Keyless Entry, P225/60R18 Tires *Possible Engine and Suspension Issue*
Miles: 107,981

322 2009 Dodge Charger Sedan

Location: Washougal Washington
VIN: 2B3KA43T99H632394
Engine: V8 Gas Transmission: Automatic
Power Windows, Power Mirrors, Power Locks, Power Driver Seat, Cruise Control, Tilt Wheel, A/C, AM/FM/CD, P225/60R18 Tires
Miles: 112,353

323 2010 Dodge Avenger SXT Sedan

Location: Washougal Washington
VIN: 1B3CC4FB9AN227102
Engine: 2.4L 4cyl Gas Transmission: Automatic
Power Windows, Power Mirrors, Power Locks, Cruise Control, Tilt Wheel, A/C, AM/FM/CD/Aux, 215/65R16 Tires
Miles: 87,389

324 2011 Ford Crown Victoria Sedan

Location: Washougal Washington
VIN: 2FABP7BV4BX144439
Engine: 4.6L V8 Gas Transmission: Automatic
Power Windows, Power Mirrors, Power Locks, Power Driver Seat, Power Adjustable Pedals, AM/FM/CD, A/C, Tilt Wheel, Hard Plastic Rear Seat, Includes Cloth Rear Seat (not installed), P235/55R17 Tires, *Possible Rear Axle Issue*
Miles: 129,702

LOT # DESCRIPTION

325 2011 Ford Crown Victoria Sedan

Location: Washougal Washington

VIN: 2FABP7BV0BX144440

Engine: 4.6L V8 Gas Transmission: Automatic

Power Windows, Power Mirrors, Power Locks, Power Driver Seat, Power

Adjustable Pedals, AM/FM/CD, A/C, Tilt Wheel, Hard Plastic Rear Seat, Includes

Cloth Rear Seat (not installed), Spot Light, P235/55R17 Tires

Miles: 131,994

326 2011 Ford Crown Victoria Sedan

Location: Washougal Washington

VIN: 2FABP7BV2BX144441

Engine: 4.6L V8 Gas Transmission: Automatic

Power Windows, Power Mirrors, Power Locks, Power Driver Seat, Power

Adjustable Pedals, AM/FM/CD, A/C, Tilt Wheel, Hard Plastic Rear Seat, Includes

Vinyl Rear Seat (not installed), P235/55R17 Tires

Miles: 129,795

327 2010 Ford Crown Victoria Sedan

Location: Washougal Washington

VIN: 2FABP7BV2AX124849

Engine: 4.6L V8 Gas Transmission: Automatic

Power Windows, Power Mirrors, Power Locks, Power Driver Seat, Power

Adjustable Pedals, Cruise Control, Tilt Wheel, A/C, AM/FM/CD, Hard Plastic Rear

Seat, Cloth Rear Seat Included (not installed), P235/55R17 Tires

Miles: 97,372

328 2009 Ford Crown Victoria Sedan

Location: Washougal Washington

VIN: 2FAHP71V39X142140

Engine: 4.6L V8 Gas Transmission: Automatic

Power Windows, Power Mirrors, Power Locks, Power Driver Seat, Power

Adjustable Pedals, Tilt Wheel, A/C, AM/FM, P235/55R17 Tires

Miles: 123,247

330 2006 Chevrolet Impala Sedan

Location: Washougal Washington

VIN: 2G1WS581069375389

Engine: 3.9L V6 Gas Transmission: Automatic

Power Windows, Power Mirrors, Power Locks, Power Driver Seat, Tilt Wheel,

Cruise Control, A/C, AM/FM/CD, P225/60R16 Tires

Miles: 105,603

LOT # DESCRIPTION

331 2006 Chevrolet Impala Sedan
Location: Washougal Washington
VIN: 2G1WS581369375838
Engine: 3.9L V6 Gas Transmission: Automatic
Power Windows, Power Mirrors, Power Locks, Power Driver Seat, Cruise Control,
Tilt Wheel, A/C, AM/FM/CD, P225/60R16 Tires
Miles: 116,271

332 2005 Chevrolet Impala Sedan
Location: Washougal Washington
VIN: 2G1WF55K459324820
Engine: 3.8L V6 Gas Transmission: Automatic
Power Windows, Power Mirrors, Power Locks, Power Driver Seat, Tilt Wheel,
Cruise Control, A/C, Dual Climate Control, AM/FM/Cassette, P225/60R16 Tires
Miles: 109,783

333 2012 Ford Taurus Sedan
Location: Washougal Washington
VIN: 1FAHP2DW3CG130770
Engine: 3.5L V6 Gas Transmission: Automatic
Power Windows, Power Mirrors, Power Locks, Power Seats, Cruise Control, Tilt
Wheel, A/C, AM/FM/CD w/Steering Wheel Controls, 235/60R17 Tires
Miles: 146,520

334 2017 Ford Focus Sedan
Location: Washougal Washington
VIN: 1FADP3E2XHL279143
Engine: 2.0L Gas Transmission: Automatic
Power Windows, Power Mirrors, Power Locks, Tilt Wheel, Blue Tooth, A/C,
AM/FM/CD w/Steering Wheel Controls, Rear View Camera, Parts in Rear Seat &
Trunk, 195/65R15 Tires, *Non-Operational*
Miles: 2,807

335 2008 Ford Focus SE Sedan
Location: Washougal Washington
VIN: 1FAHP34N58W224434
Engine: 2.0L 4cyl Gas Transmission: Automatic
A/C, AM/FM/CD, Tilt Wheel, 195/60R15 Tires
Miles: 47,166

336 2007 Ford Focus SE Sedan
Location: Washougal Washington
VIN: 1FAHP34N57W282090
Engine: 2.0L 4cyl Gas Transmission: Automatic
Power Windows, Power Mirrors, Power Locks, Cruise Control, Tilt Wheel,

LOT #	DESCRIPTION
-------	-------------

AM/FM/CD/MP3, A/C, 195/60R15 Tires
Miles: 84,176

337 2007 Ford Focus SE Sedan

Location: Washougal Washington
VIN: 1FAHP34N97W282092
Engine: 2.0L 4cyl Gas Transmission: Automatic
Power Windows, Power Mirrors, Power Locks, Cruise Control, Tilt Wheel,
AM/FM/CD, A/C, P195/60R15 Tires
Miles: 45,118

338 2007 Ford Focus SE Sedan

Location: Washougal Washington
VIN: 1FAHP34N77W123992
Engine: 2.0L 4cyl Gas Transmission: Automatic
Power Windows, Power Mirrors, Power Locks, Cruise Control, Tilt Wheel,
AM/FM/CD, A/C, P195/60R15 Tires
Miles: 81,222

339 2007 Chevrolet Malibu LT Sedan

Location: Washougal Washington
VIN: 1G1ZT57F67F257444
Engine: 2.2L 4cyl Gas Transmission: Automatic
Power Windows, Power Mirrors, Power Locks, Cruise Control, AM/FM/CD, A/C,
Tilt Wheel, Traction Control, 215/60R16 Tires
Miles: 48,550

340 2007 Chevrolet Malibu LT Sedan

Location: Washougal Washington
VIN: 1G1ZT57F37F260060
Engine: 2.4L 4cyl Gas Transmission: Automatic
Power Windows, Power Mirrors, Power Locks, Cruise Control, Tilt Wheel, Traction
Control, A/C, AM/FM/CD w/Steering Wheel Controls, 215/60R16 Tires
Miles: 104,017

341 2007 Chevrolet Malibu LT Sedan

Location: Washougal Washington
VIN: 1G1ZT57F17F258016
Engine: 2.2L 4cyl Gas Transmission: Automatic
Power Windows, Power Mirrors, Power Locks, Cruise Control, Tilt Wheel, A/C,
AM/FM/CD w/Steering Wheel Controls, 215/60R16 Tires
Miles: 35,212

LOT # DESCRIPTION

342 2007 Chevrolet Malibu LT Sedan

Location: Washougal Washington

VIN: 1G1ZT57F87F256361

Engine: 2.2L 4cyl Gas Transmission: Automatic

Power Windows, Power Mirrors, Power Locks, Cruise Control, Tilt Wheel, Traction Control, A/C, AM/FM/CD w/Steering Wheel Controls, 215/60R16 Tires

Miles: 114,775

343 2008 Ford Fusion SE Sedan

Location: Washougal Washington

VIN: 3FAHP06Z08R190002

Engine: 2.3L 4cyl Gas Transmission: Automatic

Power Windows, Power Mirrors, Power Locks, Cruise Control, Tilt Wheel, A/C, AM/FM/CD/MP3, 205/60R16 Tires

Miles: 76,360

344 2000 Dodge Stratus Sedan

Location: Washougal Washington

VIN: 1B3EJ46X3YN256647

Engine: 2.4L 4cyl Gas Transmission: Automatic

Power Windows, Power Mirrors, Power Locks, Power Driver Seat, Cruise Control, AM/FM/Cassette, A/C, Tilt Wheel, 195/70R14 Tires

Miles: 69,689

345 1998 Volkswagen Jetta Sedan

Location: Washougal Washington

VIN: 3VWRF81HXWM211587

Engine: 4 Cyl Turbo Diesel Transmission: 5 Speed

A/C, Cruise Control, Sunroof, P185/60R14 Tires, *Non-Operational*

Title Branded: NV Salvage-Damaged, CA Salvaged-Repaired

346 2014 Good Earth Firefly Utility Cart

Location: Washougal Washington

VIN: 1G9A00350D1429043

Engine: Electric Transmission: Automatic

Enclosed Cab, 3ft 10in. x 3ft. 11in. Enclosed Bed, Single Stationary Seat, Heated Seat, AM/FM/MP3, Climate Control, 175/65R14 Tires, *Non-Operational*

Miles: 6,727

347 2014 Good Earth Firefly Utility Cart

Location: Washougal Washington

VIN: 1G9A00352D1429044

Engine: Electric Transmission: Automatic

Enclosed Cab, 3ft 10in. x 3ft. 11in. Enclosed Bed, Single Stationary Seat, Heated Seat, AM/FM/MP3, Climate Control, 175/65R14 Tires, *Non-Operational*

LOT # DESCRIPTION

Miles: 2,402

348 2020 40ft. Shipping Container

Location: Spokane Washington

High Cube, 4 Side Doors, 1 End Door, Lock Box, Fork Pockets

349 2020 40ft. Shipping Container

Location: Spokane Washington

High Cube, 2 Side Doors, 1 End Door, Lock Box, Fork Pockets

350 2020 9ft. Shipping Container

Location: Spokane Washington

1 Door, 1 Window

351 2020 9ft. Shipping Container

Location: Spokane Washington

1 Door, 1 Window

352 2020 8ft. Shipping Container

Location: Spokane Washington

1 Door, 1 Window

353 2020 8ft. Shipping Container

Location: Spokane Washington

1 Door, 1 Window

354 2020 7ft. Shipping Container

Location: Spokane Washington

1 Door, 1 Window

355 1998 Rol-Lift Dock Loading Platform

Location: Washougal Washington

S/N: 132885

3,000lb Capacity, Square D Remote, Diamond Plate Platform

356 2020 Greatbear Trencher

Location: Spokane Washington

To Fit Skid Steer Loader

357 2020 Wolverine Hydraulic Auger

Location: Washougal Washington

2 Auger Bits, To Fit Skid Steer Loader

358 2020 Wolverine Hydraulic Auger

Location: Washougal Washington

2 Auger Bits, To Fit Skid Steer Loader

LOT #	DESCRIPTION
359	2020 Wolverine Auger Location: Spokane Washington To Fit Skid Steer Loader
360	2020 Wolverine Auger Location: Spokane Washington To Fit Skid Steer Loader
361	2020 Wolverine Auger Location: Spokane Washington To Fit Skid Steer Loader
362	2020 Wolverine Auger Location: Spokane Washington To Fit Skid Steer Loader
363	2020 Greatbear Auger Location: Spokane Washington 3 Bits, To Fit Skid Steer Loader
364	2020 Greatbear Auger Location: Spokane Washington 3 Bits, To Fit Skid Steer Loader
365	2020 Greatbear SH750 Hydraulic Breaker Location: Spokane Washington To Fit Skid Steer Loader
366	2020 Greatbear 72in. Brush Cutter Location: Spokane Washington To Fit Skid Steer Loader
367	2020 Greatbear 72in. Brush Cutter Location: Spokane Washington To Fit Skid Steer Loader
368	2020 Wolverine 72in. Brush Cutter Location: Spokane Washington To Fit Skid Steer Loader
369	2020 Wolverine 72in. Brush Cutter Location: Spokane Washington To Fit Skid Steer Loader
370	2020 Wolverine 72in. Brush Cutter Location: Spokane Washington To Fit Skid Steer Loader

Live Online Heavy Equipment & Commercial Truck 4/29/2020

LOT #	DESCRIPTION
371	2020 Wolverine 72in. Brush Cutter Location: Spokane Washington To Fit Skid Steer Loader
372	2020 Wolverine 72in. Brush Cutter Location: Spokane Washington To Fit Skid Steer Loader
373	2020 Wolverine 72in. Brush Cutter Location: Spokane Washington To Fit Skid Steer Loader
374	2020 Wolverine 72in. Brush Cutter Location: Spokane Washington To Fit Skid Steer Loader
375	2020 Wolverine 72in. Brush Cutter Location: Spokane Washington To Fit Skid Steer Loader
376	2020 Wolverine 72in. Brush Cutter Location: Spokane Washington To Fit Skid Steer Loader
377	2020 Wolverine Rotary Tiller Location: Spokane Washington To Fit Skid Steer Loader
378	2020 Wolverine Rotary Tiller Location: Spokane Washington To Fit Skid Steer Loader
379	2020 Wolverine Rotary Tiller Location: Spokane Washington To Fit Skid Steer Loader
380	2020 Greatbear 72in. Box Broom Location: Spokane Washington To Fit Skid Steer Loader
381	2020 Wolverine 72in. Box Broom Location: Spokane Washington To Fit Skid Steer Loader
382	2020 Wolverine 72in. Angle Broom Location: Spokane Washington To Fit Skid Steer Loader

LOT #	DESCRIPTION
383	2020 Greatbear YS-86 Snow Plow Location: Spokane Washington 86in., To Fit Skid Steer Loader
384	2020 Greatbear YS-86 Snow Plow Location: Spokane Washington 86in., To Fit Skid Steer Loader
385	2020 Greatbear Concrete Mixer Location: Spokane Washington 50-70 rpm Mixing Speed, 16-21 mpa Operating Pressure, 75-140 lpm Operating Flow
386	2020 Wolverine Concrete Mixer Location: Spokane Washington To Fit Skid Steer Loader
387	2020 Wolverine Salt & Sand Spreader Location: Spokane Washington To Fit Skid Steer Loader
388	2020 Wolverine 72in. Grapple Bucket Location: Washougal Washington To Fit Skid Steer Loader
389	2020 Wolverine Grapple Bucket Location: Spokane Washington To Fit Skid Steer Loader
390	2020 Wolverine Grapple Bucket Location: Spokane Washington To Fit Skid Steer Loader
391	2020 Greatbear 84in. Rock Bucket Location: Spokane Washington To Fit Skid Steer Loader
392	2020 Greatbear 78in. Rock Bucket Location: Spokane Washington To Fit Skid Steer Loader
393	2020 Greatbear 72in. Rock Bucket Location: Spokane Washington To Fit Skid Steer Loader

LOT #	DESCRIPTION
394	2020 Greatbear 66in. Rock Bucket Location: Spokane Washington To Fit Skid Steer Loader
395	2020 66in. GP Bucket Location: Washougal Washington To Fit Skid Steer Loader
396	66in. Grapple Bucket Location: Washougal Washington To Fit Skid Steer Loader
397	Bobcat 5B Landscape Rake Location: Spokane Washington To Fit Skidsteer Loader, 1500-2000lb Operating Capacity
398	Delta Cooling Towers Location: Washougal Washington Dimensions: 16ft 8in L x 8ft 8in W x 10ft H
399	Water Recirculating Grattle Location: Washougal Washington Dimensions: 16ft 6in L x 102in W
400	2020 Greatbear Hot Water Pressure Washer Location: Spokane Washington 4,000psi, Water Tank, Lifan 13 HP Gas Engine, Pressure Washing Wand, (4) Washing Tips, Boiler
401	2020 Great Bear 1yd Self Dumping Hopper Location: Spokane Washington Fork Pockets
402	2020 Great Bear 1yd Self Dumping Hopper Location: Spokane Washington Fork Pockets
403	2020 Steelman 10ft. Work Bench Location: Spokane Washington 15 Drawers, 2 Cabinets, Red/Black In Color
404	2020 Steelman 10ft. Work Bench Location: Spokane Washington 15 Drawers, 2 Cabinets, Red/Black In Color

Live Online Heavy Equipment & Commercial Truck 4/29/2020

LOT #	DESCRIPTION
405	2020 Steelman 10ft. Work Bench Location: Spokane Washington 15 Drawers, 2 Cabinets, Blue/Black In Color
406	2020 Steelman 7ft. Work Bench Location: Spokane Washington 10 Drawers, 2 Cabinets, Blue/Black In Color
407	2020 Steelman 7ft. Work Bench Location: Spokane Washington 10 Drawers, 2 Cabinets, Red/Black In Color
408	2020 Steelman 7ft. Work Bench Location: Spokane Washington 20 Drawers, Blue/Black In Color
409	2020 Steelman 7ft. Work Bench Location: Spokane Washington 20 Drawers, Red/Black In color
410	Reefer Box Location: Washougal Washington Aluminum Interior, Lighted, Entry Ramp, (2) Motor Assemblies, 22ft. x 8ft.
411	2020 Bastone 2- Stall Portable Toilet Location: Spokane Washington 110V
411a	2020 Bastone 2- Stall Portable Toilet Location: Spokane Washington 110V
412	2020 Bastone Portable Toilet w/Shower Location: Spokane Washington 110V
413	2020 Golden Mountain Peak Storage Shelter Location: Spokane Washington 40ft x 80ft x 20ft, Peak Roof Frame
414	2020 Golden Mountain Dome Storage Shelter Location: Spokane Washington 20ft. x 30ft. x 12ft., Dome Roof Frame
415	2020 Golden Mountain Dome Storage Shelter Location: Spokane Washington 20ft. x 30ft. x 12ft., Dome Roof Frame

Live Online Heavy Equipment & Commercial Truck 4/29/2020

LOT # DESCRIPTION

415a 2020 Golden Dome Peak Storage ShelterLocation: Spokane Washington
20ft. x 30ft. x 12ft., Dome Roof Frame

416 2020 Golden Mountain Dome Storage ShelterLocation: Spokane Washington
40ft x 80ft x 20ft, Peak Roof Frame

417 2020 Golden Mountain Container ShelterLocation: Spokane Washington
20ft. x 40ft., Peak Frame, Galvanized Tube, UV & Fire Resistant

418 2020 Golden Mountain Container ShelterLocation: Spokane Washington
20ft. x 40ft., Peak Frame, Galvanized Tube, UV & Fire Resistant

419 2020 Golden Mountain Container ShelterLocation: Spokane Washington
20ft. x 20ft., Dome Frame, Galvanized Tube, UV & Fire Resistant

420 2020 Greatbear 20ft. Wrought Iron GateLocation: Spokane Washington
Bi-Parting, "Deer" Artwork

421 2020 Greatbear 20ft. Wrought Iron GateLocation: Spokane Washington
Bi-Parting, "Deer" Artwork

422 2020 Greatbear 20ft. Wrought Iron GateLocation: Spokane Washington
Bi-Parting, "Deer" Artwork

423 2020 Greatbear 20ft. Wrought Iron GateLocation: Spokane Washington
Bi-Parting, "Deer" Artwork

424 2020 Greatbear 20ft. Wrought Iron GateLocation: Spokane Washington
Bi-Parting, "Deer" Artwork

425 2020 Greatbear 20ft. Wrought Iron GateLocation: Spokane Washington
Bi-Parting, "Deer" Artwork

426 2020 Greatbear 20ft. Wrought Iron GateLocation: Spokane Washington
Bi-Parting, "Deer" Artwork

Live Online Heavy Equipment & Commercial Truck 4/29/2020

LOT #	DESCRIPTION
427	2020 Greatbear 20ft. Wrought Iron Gate Location: Spokane Washington Bi-Parting, "Deer" Artwork
428	2020 Greatbear 20ft. Wrought Iron Gate Location: Spokane Washington Bi-Parting, "Deer" Artwork
429	2020 Greatbear 20ft. Wrought Iron Gate Location: Spokane Washington Bi-Parting, "Deer" Artwork
430	2020 Greatbear 20ft. Wrought Iron Gate Location: Spokane Washington Bi-Parting, "Deer" Artwork
431	2020 Greatbear 20ft. Wrought Iron Gate Location: Spokane Washington Bi-Parting, "Deer" Artwork
432	2020 Steelman 10ft. Work Bench Location: Spokane Washington 15 Drawers, 2 Cabinets, Blue/Black In Color
433	2020 Steelman 10ft. Work Bench Location: Spokane Washington 25 Drawers, Blue/Black In Color
434	2020 Steelman 10ft. Work Bench Location: Spokane Washington 25 Drawers, Red/Black In Color
435	2020 Steelman 7ft. Work Bench Location: Spokane Washington 8 Cabinets, Red/Black In Color
436	2020 Steelman 7ft. Work Bench Location: Spokane Washington 18 Drawers, Blue/Black In Color
437	2020 Steelman 7ft. Work Bench Location: Spokane Washington 18 Drawers, Red/Black In Color
438	2020 Steelman 7ft. Work Bench Location: Spokane Washington 18 Drawers, Red/Black In Color

Live Online Heavy Equipment & Commercial Truck 4/29/2020

LOT #	DESCRIPTION
439	2020 Greatbear Webbing Sling Location: Spokane Washington 22 pcs, 2 Ton - 5 Ton
440	2020 Greatbear Double Chain Sling Location: Spokane Washington 5/16in. x 7ft. G80 Chain
441	2020 Greatbear Chains & Ratchet Binders Location: Spokane Washington (5) 9200lb Capacity Ratchet Binders, (10) 3/8in. x 20ft. G70 Chains
442	2020 Greatbear Chains & Ratchet Binders Location: Spokane Washington (5) 9200lb Capacity Ratchet Binders, (10) 3/8in. x 20ft. G70 Chains
443	2020 Greatbear Chains & Ratchet Binders Location: Spokane Washington (5) 5400lb Capacity Ratchet Binders, (10) 5/16in. x 20ft. G70 Chains
444	2020 Greatbear Chains & Ratchet Binders Location: Spokane Washington (5) 5400lb Capacity Ratchet Binders, (10) 5/16in. x 20ft. G70 Chains
445	2020 Greatbear Anchor Shackles, Qty. 38 Location: Spokane Washington 4.75 Ton - 12 Ton
446	2020 Greatbear Ratchet Straps, Qty. 24 Location: Spokane Washington (16) 2in. x 27ft, (8) 1.5in. x 27ft.
447	2020 Pallet Racking Location: Spokane Washington
448	2020 Greatbear Safety Cones, Qty. 250 Location: Spokane Washington
449	2020 Greatbear Safety Cones, Qty. 250 Location: Spokane Washington
450	2020 9-36V LED Light Location: Spokane Washington Functions as a car light
451	2020 9-36V LED Light Location: Spokane Washington Functions as a car light

LOT # DESCRIPTION

452 2020 9-36V LED Light
Location: Spokane Washington
Functions as a car light

453 2020 9-36V LED Light
Location: Spokane Washington
Functions as a car light

CONSIGN WITH



J. STOUT AUCTIONS

LIVE ONLINE-ONLY AUCTIONS

FLEXIBLE. RELIABLE. MOBILE.

WHAT JSA LIVE ONLINE-ONLY AUCTIONS CAN DO FOR YOU:

- LET US MARKET YOUR INVENTORY TO OUR AUDIENCE OF 5 MILLION PLUS
- LIVE AUCTIONEER MEANS WE WILL TAKE THE TIME TO SELL YOUR ITEM FOR WHAT IT'S WORTH
- CUSTOMERS CAN BID ONLINE VIA DESKTOP, MOBILE OR PROXIBID
- JSA CONDUCTS MORE THAN 25 SUCCESSFUL ONLINE AUCTION EVENTS PER YEAR
- 80% OF ALL BIDDING INFLUENCED BY ONLINE BUYERS
- REGIONAL, PRIVATELY OWNED, YOUR NW AUCTION SOLUTION



NEXT LIVE ONLINE-ONLY AUCTION:

May 28th, 2020

**Preview in Person: By Appt. Only
Equipment in Multiple Locations**

www.jstoutauction.com / 888-230-8840 / 520 S. 28th Street, Washougal, WA